

PRODUCT DATA SHEET



Bioworld Technology, Inc.

p-CPI-17 (T38) Antibody

Cat No.: BS4780

Host: Rabbit

Reactivity: Human, Mouse, Rat

BACKGROUND

CPI-17 is a phosphorylation-dependent inhibitory protein for smooth muscle Myosin phosphate. CPI-17 was originally identified as a 17 kDa PKC-potentiated inhibitory protein of protein phosphatase-1, which is dominantly expressed in smooth muscle. Phosphorylation at Threonin 38, in vitro, by PKC or Rho-kinase enhances the inhibitory potency toward myosin phosphatase. CPI-17 is also phosphorylated at Threonine 38 by protein kinase N and might be involved in the calcium sensitization of smooth muscle contraction as a downstream effector of Rho and/or arachidonic acid. CPI-17 is dually phosphorylated at Serine 12 and Threonine 38 by a MYPT-associated kinase, M110 kinase.

PRODUCT

1 mg/ml in Phosphate buffered saline (PBS) with 15 mM sodium azide, approx. pH 7.2.

PURIFICATION & PURITY

The antibody was affinity-purified from rabbit antiserum by affinity-chromatography using epitope-specific immunogen and the purity is > 95% (by SDS-PAGE).

APPLICATIONS

WB: 1:500 ~ 1:1000

IHC: 1:50 ~ 1:200 (Recommended Dilutions)

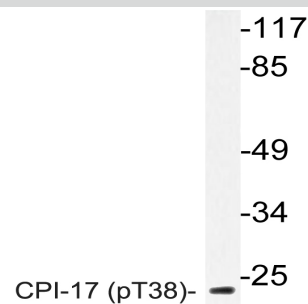
STORAGE & STABILITY

Store at 4°C short term. Aliquot and store at -20°C long term. Avoid freeze-thaw cycles.

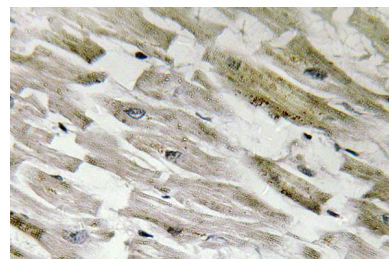
SPECIFICITY

p-CPI-17 (T38) antibody detects endogenous levels of p-CPI-17 antibody protein.

DATA



Western blot (WB) analysis of p-CPI-17 (T38) antibody in extracts from RAW264.7 cells.



Immunohistochemistry (IHC) analyzes of p-CPI-17 (T38) antibody in paraffin-embedded human heart tissue.

RESEARCH USE

For research use only, not for use in diagnostic procedures.

Bioworld Technology, Inc.

1660 South Highway 100, Suite 500 St. Louis Park, MN 55416, USA. Tel: 6123263284
www.bioworlde.com Orders: order@bioworlde.com Support: support@bioworlde.com