

## AKT2 (phospho-S474) polyclonal antibody

Catalog: BS4720

Host: Rabbit

Reactivity: Human, Mouse, Rat

### Background:

AKT, also known as protein kinase B (PKB), is a 57 kDa serine/threonine protein kinase. There are three mammalian isoforms of Akt: AKT1 (PKB alpha), AKT2 (PKB beta) and AKT3 (PKB gamma) with AKT2 and AKT3 being approximately 82% identical with the AKT1 isoform. Each isoform has a pleckstrin homology (PH) domain, a kinase domain and a carboxy terminal regulatory domain. AKT was originally cloned from the retrovirus AKT8, and is a key regulator of many signal transduction pathways. Its tight control over cell proliferation and cell viability are manifold; overexpression or inappropriate activation of AKT has been seen in many types of cancer.

### Product:

Rabbit IgG, 1mg/ml in PBS with 0.02% sodium azide, 50% glycerol, pH7.2

### Molecular Weight:

~ 60 kDa

### Swiss-Prot:

P31751

### Purification&Purity:

The antibody was affinity-purified from rabbit antiserum by affinity-chromatography using epitope-specific immunogen and the purity is > 95% (by SDS-PAGE).

### Applications:

WB: 1:500~1:1000

IHC: 1:50~1:200

### Storage&Stability:

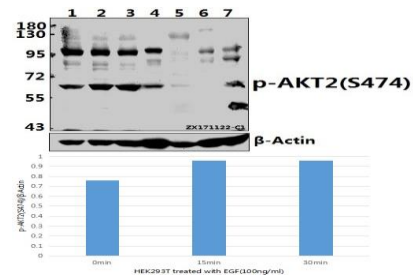
Store at 4 °C short term. Aliquot and store at -20 °C long term. Avoid freeze-thaw cycles.

### Specificity:

p-AKT2 (S474) polyclonal antibody detects endogenous levels of AKT2 protein only when phosphorylated at Ser474. This antibody does not cross-react with AKT1 and AKT3 protein when phosphorylated at the corresponding

residues.

### DATA:



Western blot (WB) analysis of p-AKT2(S474) pAb at 1:500 dilution

Lane1:HEK293T whole cell lysate(40ug)

Lane2:HEK293T treated with EGF(100ng/ml,15 minutes) whole cell lysate(40ug)

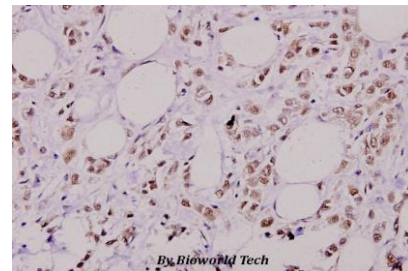
Lane3:HEK293T treated with EGF(100ng/ml,30 minutes) whole cell lysate(40ug)

Lane4:The Brain tissue lysate of Rat(40ug)

Lane5:The Brain tissue lysate of Mouse(40ug)

Lane6:C6 whole cell lysate(40ug)

Lane7:AML-12 whole cell lysate(40ug)



Immunohistochemistry (IHC) analyzes of p-AKT2 (S474) pAb in paraffin-embedded human breast carcinoma tissue at 1:100.

### Note:

For research use only, not for use in diagnostic procedure.

### Bioworld Technology, Inc.

Add: 1660 South Highway 100, Suite 500 St. Louis Park, MN 55416, USA.

Email: [info@bioworld.com](mailto:info@bioworld.com)

Tel: 6123263284

Fax: 6122933841

### Bioworld technology, co. Ltd.

Add: No 9, weidi road Qixia District Nanjing, 210046, P. R. China.

Email: [info@biogot.com](mailto:info@biogot.com)

Tel: 0086-025-68037686

Fax: 0086-025-68035151