

## PKC $\theta$ (phospho-S676) polyclonal antibody

Catalog: BS4708

Host: Rabbit

Reactivity: Human, Mouse, Rat

### Background:

Members of the protein kinase C (PKC) family play a key regulatory role in variety of cellular functions including cell growth and differentiation, gene expression, hormone secretion and membrane function. PKCs were originally identified as serine/threonine protein kinases whose activity was dependent on calcium and phospholipids. Diacylglycerols (DAG) and tumor promoting phorbol esters bind to and activate PKC. PKCs can be subdivided into at least two major classes including conventional (c) PKC isoforms ( $\alpha$ ,  $\beta$ I,  $\beta$ II and  $\gamma$ ) and novel (n) PKC isoforms ( $\delta$ ,  $\epsilon$ ,  $\zeta$ ,  $\eta$  and  $\theta$ ). Patterns of expression for each PKC isoform differs among tissues and PKC family members exhibit clear differences in their cofactor dependencies. For instance, the kinase activities of nPKC  $\delta$  and  $\epsilon$  are independent of  $Ca^{++}$ . On the other hand, nPKC and  $\epsilon$ , as well as all of the cPKC members, possess phorbol ester-binding activities and kinase activities.

### Product:

Rabbit IgG, 1mg/ml in PBS with 0.02% sodium azide, 50% glycerol, pH7.2

### Molecular Weight:

~ 80 kDa

### Swiss-Prot:

Q04759

### Purification&Purity:

The antibody was affinity-purified from rabbit antiserum by affinity-chromatography using epitope-specific immunogen and the purity is > 95% (by SDS-PAGE).

### Applications:

WB: 1:500~1:1000

IHC: 1:50~1:200

IF: 1:50~1:200

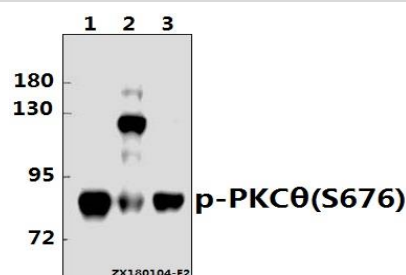
### Storage&Stability:

Store at 4 °C short term. Aliquot and store at -20 °C long term. Avoid freeze-thaw cycles.

### Specificity:

p-PKC  $\theta$  (S676) polyclonal antibody detects endogenous levels of PKC  $\theta$  protein only when phosphorylated at Ser676.

### DATA:

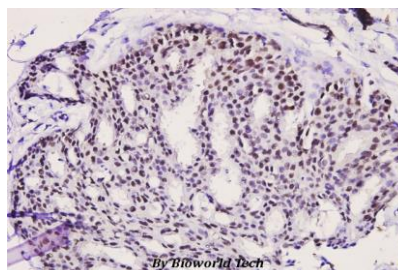


Western blot (WB) analysis of p-PKC  $\theta$  (S676) pAb at 1:500 dilution

Lane1: The Spleen tissue lysate of Mouse(40ug)

Lane2: K562 whole cell lysate(40ug)

Lane3: The Thymus tissue lysate of Rat(40ug)



Immunohistochemistry (IHC) analyzes of p-PKC  $\theta$  (S676) pAb in paraffin-embedded human breast carcinoma tissue at 1:100.

### Note:

For research use only, not for use in diagnostic procedure.

### Bioworld Technology, Inc.

Add: 1660 South Highway 100, Suite 500 St. Louis Park, MN 55416, USA.

Email: [info@bioworld.com](mailto:info@bioworld.com)

Tel: 6123263284

Fax: 6122933841

### Bioworld technology, co. Ltd.

Add: No 9, weidi road Qixia District Nanjing, 210046, P. R. China.

Email: [info@biogot.com](mailto:info@biogot.com)

Tel: 0086-025-68037686

Fax: 0086-025-68035151