

## p70 S6K (phospho-S418) polyclonal antibody

Catalog: BS4653

Host: Rabbit

Reactivity: Human, Mouse, Rat

### Background:

p70 S6 kinase is a mitogen activated Ser/Thr protein kinase that is required for cell growth and G1 cell cycle progression. p70 S6 kinase phosphorylates the S6 protein of the 40S ribosomal subunit and is involved in translational control of 5' oligopyrimidine tract mRNAs. A second isoform, p85 S6 kinase, is derived from the same gene and is identical to p70 S6 kinase except for 23 extra residues at the amino terminus, which encode a nuclear localizing signal. Ser411, Thr421 and Ser424 lie within a Ser-Pro-rich region located in the pseudosubstrate region. Phosphorylation at these sites is thought to activate p70 S6 kinase via relief of pseudosubstrate suppression. Another LY294002 and rapamycin sensitive phosphorylation site, Ser371, is an in vitro substrate for mTOR and correlates well with the activity of a partially rapamycin resistant mutant p70 S6 kinase.

### Product:

Rabbit IgG, 1mg/ml in PBS with 0.02% sodium azide, 50% glycerol, pH7.2

### Molecular Weight:

~59,70,85 kDa

### Swiss-Prot:

P23443

### Purification&Purity:

The antibody was affinity-purified from rabbit antiserum by affinity-chromatography using epitope-specific immunogen and the purity is > 95% (by SDS-PAGE).

### Applications:

WB: 1:500~1:1000

IHC: 1:50~1:200

### Storage&Stability:

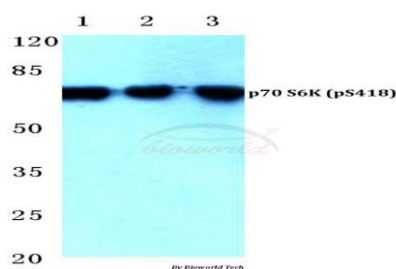
Store at 4 °C short term. Aliquot and store at -20 °C long term. Avoid freeze-thaw cycles.

### Specificity:

p-p70 S6K (S418) polyclonal antibody detects endoge-

nous levels of p70 S6 kinase only when phosphorylated at Ser418. This antibody also detects p85 S6 kinase when phosphorylated at Ser441.

### DATA:

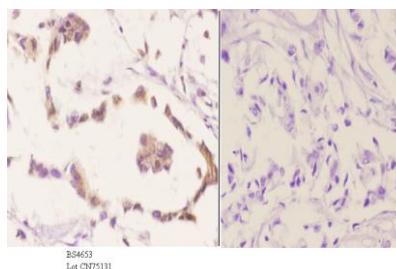


Western blot (WB) analysis of p-p70 S6K (S418) polyclonal antibody at 1:500 dilution

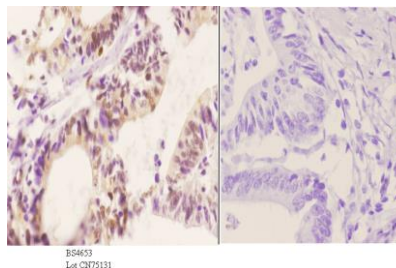
Lane1: MCF-7 cell treated with EGF(0.1ng/ML,30min)

Lane2: sp2/0 cell treated with EGF(0.1ng/ML,30min)

Lane3: H9C2 cell treated with EGF(0.1ng/ML,30min)



Immunohistochemistry (IHC) analyzes of p-p70 S6K (S418) pAb in paraffin-embedded human breast carcinoma tissue at 1:50. showing cytoplasmic and nucleus staining. Negative control (the right) Using PBS instead of primary antibody, secondary antibody is Goat Anti-Rabbit IgG-biotin followed by avidin-peroxidase.



Immunohistochemistry (IHC) analyzes of p-p70 S6K (S418) pAb in

### Bioworld Technology, Inc.

Add: 1660 South Highway 100, Suite 500 St. Louis Park, MN 55416, USA.

Email: [info@bioworld.com](mailto:info@bioworld.com)

Tel: 6123263284

Fax: 6122933841

### Bioworld technology, co. Ltd.

Add: No 9, weidi road Qixia District Nanjing, 210046, P. R. China.

Email: [info@biogot.com](mailto:info@biogot.com)

Tel: 0086-025-68037686

Fax: 0086-025-68035151



## PRODUCT DATA SHEET

Bioworld Technology, Inc.

paraffin-embedded human colon carcinoma tissue at 1:50. showing cytoplasmic and nucleus staining. Negative control (the right) Using PBS instead of primary antibody, secondary antibody is Goat Anti-Rabbit

IgG-biotin followed by avidin-peroxidase.

**Note:**

For research use only, not for use in diagnostic procedure.

---

**Bioworld Technology, Inc.**

Add: 1660 South Highway 100, Suite 500 St. Louis Park,  
MN 55416, USA.

Email: [info@bioworld.com](mailto:info@bioworld.com)

Tel: 6123263284

Fax: 6122933841

**Bioworld technology, co. Ltd.**

Add: No 9, weidi road Qixia District Nanjing, 210046,  
P. R. China.

Email: [info@biogot.com](mailto:info@biogot.com)

Tel: 0086-025-68037686

Fax: 0086-025-68035151