

## PRODUCT DATA SHEET



Bioworld Technology, Inc.

### p-PI3K p85 (Y458)/p55 (Y199) pAb

Cat No.: BS4605

Host: Rabbit

Reactivity: Human, Mouse, Rat

#### BACKGROUND

The enzyme phosphatidylinositol 3 kinase (PI3 kinase) is a lipid kinase that generates phosphatidylinositol 3, 4, 5-triphosphate in response to receptor activation in many signal transduction pathways. Class IA PI3Ks exist as a heterodimer of a catalytic 110 kDa (p110) and a regulatory p85 subunit (e.g. p85 alpha). p85 alpha is an adaptor molecule that regulates the activity of the catalytic p110 subunit by binding to phosphorylated receptor tyrosine kinases (RTKs) through its SH2 domain and mediating the interaction between p110 and the plasma membrane. p85 alpha is necessary for insulin-stimulated increase in glucose uptake and glycogen synthesis in insulin-sensitive tissues.

#### PRODUCT

1 mg/ml in Phosphate buffered saline (PBS) with 0.05

#### Molecular Weight

~54,83 kDa

#### PURIFICATION & PURITY

The antibody was affinity-purified from rabbit antiserum by affinity-chromatography using epitope-specific immunogen and the purity is > 95% (by SDS-PAGE).

#### APPLICATIONS

WB: 1:500 ~ 1:1000

IHC: 1:50 ~ 1:200

IF: 1:50 ~ 1:200 (Recommended Dilutions)

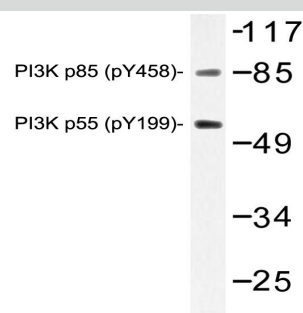
#### STORAGE & STABILITY

Store at 4°C short term. Aliquot and store at -20°C long term. Avoid freeze-thaw cycles.

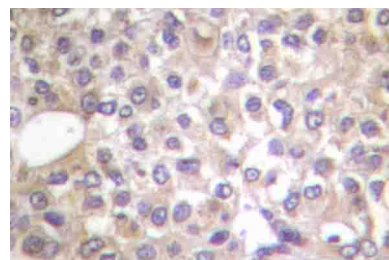
#### SPECIFICITY

p-PI3K p85 (Y458)/p55 (Y199) pAb detects endogenous levels of PI3K p85/p55 protein only when phosphorylated at Y458/Y199

#### DATA



Western blot (WB) analysis of p-PI3K p85 (Y458)/p55 (Y199) pAb in extracts from NIH/3T3 cells.



Immunohistochemistry (IHC) analyzes of p-PI3K p85 (Y458)/p55 (Y199) pAb in paraffin-embedded human breast carcinoma tissue.

#### RESEARCH USE

For research use only, not for use in diagnostic procedures.

Bioworld Technology, Inc.

1660 South Highway 100, Suite 500 St. Louis Park, MN 55416, USA. Tel: 6123263284  
www.bioworlde.com Orders: order@bioworlde.com Support: support@bioworlde.com