

## PKC $\epsilon$ (phospho-S729) polyclonal antibody

Catalog: BS4583

Host: Rabbit

Reactivity: Human

### BackGround:

Members of the protein kinase C (PKC) family play a key regulatory role in a variety of cellular functions including cell growth and differentiation, gene expression, hormone secretion and membrane function. PKCs were originally identified as serine/threonine protein kinases whose activity was dependent on calcium and phospholipids. Diacylglycerols (DAG) and tumor promoting phorbol esters bind to and activate PKC. PKCs can be subdivided into many different isoforms ( $\alpha$ ,  $\beta$ I,  $\beta$ II,  $\gamma$ ,  $\delta$ ,  $\epsilon$ ,  $\Omega$ , h,  $\dagger$ ,  $\lambda$ ,  $\mu$  and n). Patterns of expression for each PKC isoform differ among tissues and PKC family members exhibit clear differences in their cofactor dependencies. For instance, the kinase activities of PKC  $\delta$  and  $\epsilon$  are independent of  $Ca^{++}$ . On the other hand, most of the other PKC members possess phorbol ester-binding activities and kinase activities.

### Product:

Rabbit IgG, 1mg/ml in PBS with 0.02% sodium azide, 50% glycerol, pH7.2

### Molecular Weight:

~ 76~85 kDa

### Swiss-Prot:

Q02156

### Purification&Purity:

The antibody was affinity-purified from rabbit antiserum by affinity-chromatography using epitope-specific immunogen and the purity is > 95% (by SDS-PAGE).

### Applications:

WB: 1:500~1:1000

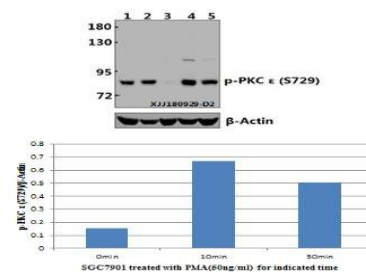
### Storage&Stability:

Store at 4 °C short term. Aliquot and store at -22 °C long term. Avoid freeze-thaw cycles.

### Specificity:

PKC  $\epsilon$  (phospho-S729) polyclonal antibody detects endogenous levels of PKC  $\epsilon$  protein only when phosphorylated at Ser729.

### DATA:



Western blot (WB) analysis of PKC  $\epsilon$  (phospho-S729) polyclonal antibody at 1:500 dilution

Lane1:HEK293 whole cell lysate(40  $\mu$ g)

Lane2:U-87MG whole cell lysate(40  $\mu$ g)

Lane3:SGC7901 whole cell lysate(40  $\mu$ g)

Lane4:SGC7901 treated with PMA(50ng/ml)for 5 minutes then repair for 10 minutes whole cell lysate(40  $\mu$ g)

Lane5:SGC7901 treated with PMA(50ng/ml)for 5 minutes then repair for 30 minutes whole cell lysate(40  $\mu$ g)

### Note:

For research use only, not for use in diagnostic procedure.

### Bioworld Technology, Inc.

Add: 1660 South Highway 100, Suite 500 St. Louis Park, MN 55416, USA.

Email: [info@bioworld.com](mailto:info@bioworld.com)

Tel: 6123263284

Fax: 6122933841

### Bioworld technology, co. Ltd.

Add: No 9, weidi road Qixia District Nanjing, 210046, P. R. China.

Email: [info@biogot.com](mailto:info@biogot.com)

Tel: 0086-025-68037686

Fax: 0086-025-68035151