

## Catenin- $\delta$ 1 (phospho-Y228) polyclonal antibody

Catalog: BS4381

Host: Rabbit

Reactivity: Human, Mouse, Rat

### Background:

Catenin  $\delta$ -1 (p120 catenin) has an amino-terminal coiled-coil domain followed by a regulatory domain containing multiple phosphorylation sites and a central Armadillo repeat domain of ten linked 42-amino acid repeats. The carboxy-terminal tail has no known function. Catenin  $\delta$ -1 fulfills critical roles in the regulation of cell-cell adhesion as it regulates E-cadherin turnover at the cell surface to determine the level of E-cadherin available for cell-cell adhesion. Catenin  $\delta$ -1 has both positive and negative effects on cadherin-mediated adhesion. Actin dynamics are also regulated by catenin  $\delta$ -1, which modulates RhoA, Rac, and cdc42 proteins. Analogous to  $\beta$ -catenin, catenin  $\delta$ -1 translocates to the nucleus, although its role at this location is unclear. Many studies show that catenin  $\delta$ -1 is expressed irregularly or is absent in various types of tumor cells, suggesting that catenin  $\delta$ -1 may function as a tumor suppressor.

### Product:

Rabbit IgG, 1mg/ml in PBS with 0.02% sodium azide, 50% glycerol, pH7.2

### Molecular Weight:

~ 95, 100 kDa

### Swiss-Prot:

O60716

### Purification&Purity:

The antibody was affinity-purified from rabbit antiserum by affinity-chromatography using epitope-specific immunogen and the purity is > 95% (by SDS-PAGE).

### Applications:

WB: 1:500~1:1000

### Storage&Stability:

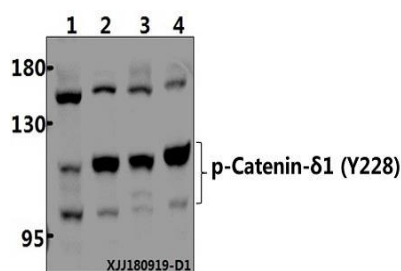
Store at 4 °C short term. Aliquot and store at -20 °C long

term. Avoid freeze-thaw cycles.

### Specificity:

Catenin- $\delta$ 1 (phospho-Y228) polyclonal antibody detects endogenous levels of Catenin- $\delta$ 1 protein only when phosphorylated at Tyr228.

### DATA:



Western blot (WB) analysis of Catenin- $\delta$ 1 (phospho-Y228) polyclonal antibody at 1:500 dilution

Lane1:Hela whole cell lysate(40  $\mu$ g)

Lane2:K562 whole cell lysate(40  $\mu$ g)

Lane3:RAW264.7 whole cell lysate(40  $\mu$ g)

Lane4:C6 whole cell lysate(40  $\mu$ g)



### Note:

For research use only, not for use in diagnostic procedure.

### Bioworld Technology, Inc.

Add: 1660 South Highway 100, Suite 500 St. Louis Park, MN 55416, USA.

Email: [info@bioworld.com](mailto:info@bioworld.com)

Tel: 6123263284

Fax: 6122933841

### Bioworld technology, co. Ltd.

Add: No 9, weidi road Qixia District Nanjing, 210046, P. R. China.

Email: [info@biogot.com](mailto:info@biogot.com)

Tel: 0086-025-68037686

Fax: 0086-025-68035151