

APC1 (phospho-S688) polyclonal antibody

Catalog: BS4375

Host: Rabbit

Reactivity: Human

BackGround:

APC1 is 1 of at least 11 subunits of the anaphase promoting complex (APC), which functions at the metaphase to anaphase transition of the cell cycle and is regulated by spindle checkpoint proteins. The APC is an E3 ubiquitin ligase that targets cell cycle regulatory proteins for degradation by the proteasome, thereby allowing progression through the cell cycle.

Product:

Rabbit IgG, 1mg/ml in PBS with 0.02% sodium azide, 50% glycerol, pH7.2

Molecular Weight:

~ 216 kDa

Swiss-Prot:

Q9H1A4

Purification&Purity:

The antibody was affinity-purified from rabbit antiserum by affinity-chromatography using epitope-specific immunogen and the purity is > 95% (by SDS-PAGE).

Applications:

WB: 1:500~1:1000

Storage&Stability:

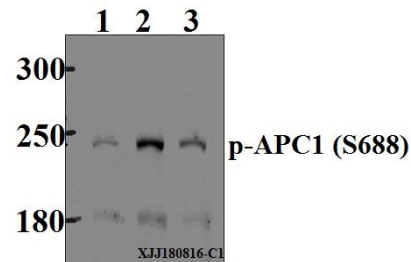
Store at 4 °C short term. Aliquot and store at -20 °C long term. Avoid freeze-thaw cycles.

Specificity:

p-APC1 (S688) pAb detects endogenous levels of APC1

protein only when phosphorylated at Ser688.

DATA:

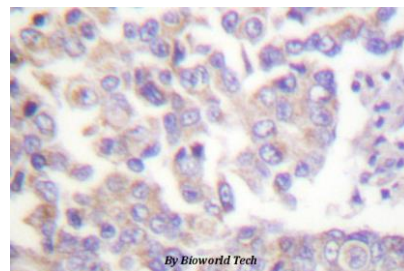


Western blot (WB) analysis of p-APC1 (S688) pAb at 1:500 dilution

Lane1:MCF-7 whole cell lysate(40 µg)

Lane2:K562 whole cell lysate(40 µg)

Lane3:HEK293T whole cell lysate(40 µg)



Note:

For research use only, not for use in diagnostic procedure.

Bioworld Technology, Inc.

Add: 1660 South Highway 100, Suite 500 St. Louis Park, MN 55416, USA.

Email: info@bioworld.com

Tel: 6123263284

Fax: 6122933841

Bioworld technology, co. Ltd.

Add: No 9, weidi road Qixia District Nanjing, 210046, P. R. China.

Email: info@biogot.com

Tel: 0086-025-68037686

Fax: 0086-025-68035151