

## AKT1 (phospho-S246) polyclonal antibody

Catalog: BS4286

Host: Rabbit

Reactivity: Human, Mouse, Rat

### BackGround:

AKT, also known as protein kinase B (PKB), is a 57 kDa serine/threonine protein kinase. There are three mammalian isoforms of Akt: AKT1 (PKB alpha), AKT2 (PKB beta) and AKT3 (PKB gamma) with AKT2 and AKT3 being approximately 82% identical with the AKT1 isoform. Each isoform has a pleckstrin homology (PH) domain, a kinase domain and a carboxy terminal regulatory domain. AKT was originally cloned from the retrovirus AKT8, and is a key regulator of many signal transduction pathways. Its tight control over cell proliferation and cell viability are manifold; overexpression or inappropriate activation of AKT has been seen in many types of cancer.

### Product:

Rabbit IgG, 1mg/ml in PBS with 0.02% sodium azide, 50% glycerol, pH7.2

### Molecular Weight:

~ 60 kDa

### Swiss-Prot:

P31749

### Purification&Purity:

The antibody was affinity-purified from rabbit antiserum by affinity-chromatography using epitope-specific immunogen and the purity is > 95% (by SDS-PAGE).

### Applications:

WB: 1:500~1:1000

IHC: 1:50~1:200

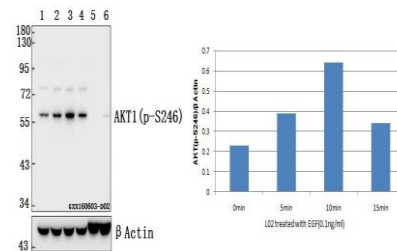
### Storage&Stability:

Store at 4 °C short term. Aliquot and store at -20 °C long term. Avoid freeze-thaw cycles.

### Specificity:

p-AKT1 (S246) polyclonal antibody detects endogenous levels of AKT1 protein only when phosphorylated at Ser246. This antibody does not cross-react with AKT2 or AKT3.

### DATA:



Western blot (WB) analysis of AKT1 (phospho-S246) polyclonal antibody at 1:500 dilution

Lane1:L02 whole cell lysate

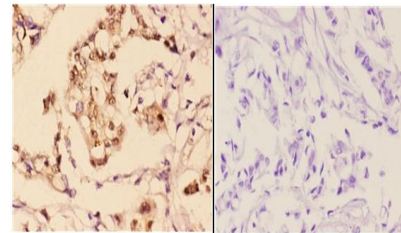
Lane2:L02 treated with EGF(0.1ng/ml,5min) whole cell lysate

Lane3:L02 treated with EGF(0.1ng/ml,10min) whole cell lysate

Lane4:L02 treated with EGF(0.1ng/ml,15min) whole cell lysate

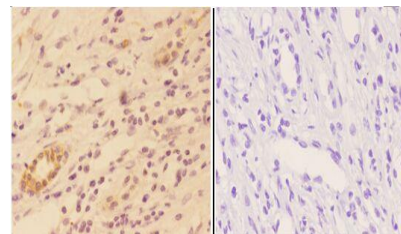
Lane5:The Heart tissue lysate of Mouse(40ug)

Lane6:The fetal Heart tissue lysate of Rat(40ug)



BS4286  
Lot CJ36131

Immunohistochemistry (IHC) analyzes of p-AKT1 (S246) pAb in paraffin-embedded human breast carcinoma tissue at 1:50, showing cytoplasmic and nuclear and membrane staining. Negative control (the right) Using PBS instead of primary antibody, secondary antibody is Goat Anti-Rabbit IgG-biotin followed by avidin-peroxidase.



BS4286  
Lot CJ36131

Immunohistochemistry (IHC) analyzes of AKT1 (phospho-S246) pAb

### Bioworld Technology, Inc.

Add: 1660 South Highway 100, Suite 500 St. Louis Park, MN 55416, USA.

Email: [info@bioworld.com](mailto:info@bioworld.com)

Tel: 6123263284

Fax: 6122933841

### Bioworld technology, co. Ltd.

Add: No 9, weidi road Qixia District Nanjing, 210046, P. R. China.

Email: [info@biogot.com](mailto:info@biogot.com)

Tel: 0086-025-68037686

Fax: 0086-025-68035151



## PRODUCT DATA SHEET

Bioworld Technology, Inc.

in paraffin-embedded human kidney carcinoma tissue at 1:50, showing cytoplasm and nucleus staining. Negative control (the right) Using PBS instead of primary antibody, secondary antibody is Goat Anti-Rabbit

IgG-biotin followed by avidin-peroxidase.

**Note:**

For research use only, not for use in diagnostic procedure.

---

**Bioworld Technology, Inc.**

Add: 1660 South Highway 100, Suite 500 St. Louis Park,  
MN 55416, USA.

Email: [info@bioworld.com](mailto:info@bioworld.com)

Tel: 6123263284

Fax: 6122933841

**Bioworld technology, co. Ltd.**

Add: No 9, weidi road Qixia District Nanjing, 210046,  
P. R. China.

Email: [info@biogot.com](mailto:info@biogot.com)

Tel: 0086-025-68037686

Fax: 0086-025-68035151