

## Rsk-1 (phospho-T359/S363) polyclonal antibody

Catalog: BS4276

Host: Rabbit

Reactivity: Human, Mouse, Rat

### BackGround:

The family of ribosomal S6 kinases (Rsk), designated Rsk-1 (or MAPKAP kinase-1), Rsk-2 and Rsk-3, are intracellular serine/threonine kinases that are important signaling intermediates in response to a broad range of ligand activated receptor tyrosine kinases. A unique feature common to the members of the Rsk family is that each possesses two non-identical complete kinase catalytic domains. An additional Rsk protein, Rsk-4, shows a high level of homology to the three previously isolated members of the human Rsk family. Rsk-4 is most abundantly expressed in brain and kidney and plays a role in normal neuronal development.

### Product:

Rabbit IgG, 1mg/ml in PBS with 0.02% sodium azide, 50% glycerol, pH7.2

### Molecular Weight:

~ 90 kDa

### Swiss-Prot:

Q15418

### Purification&Purity:

The antibody was affinity-purified from rabbit antiserum by affinity-chromatography using epitope-specific immunogen and the purity is > 95% (by SDS-PAGE).

### Applications:

WB: 1:500~1:1000

IF: 1:50~1:200

IP: 1:50~1:200

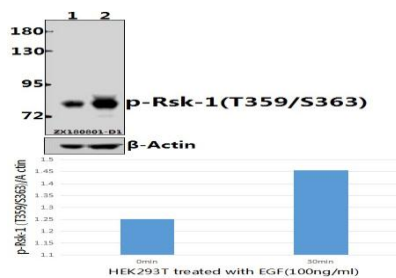
### Storage&Stability:

Store at 4 °C short term. Aliquot and store at -20 °C long term. Avoid freeze-thaw cycles.

### Specificity:

Rsk-1 (phospho-T359/S363) polyclonal antibody detects endogenous levels of Rsk-1 protein only when phosphorylated at Thr359/Ser363.

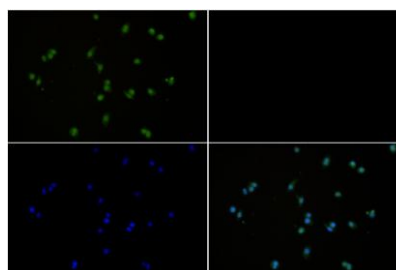
### DATA:



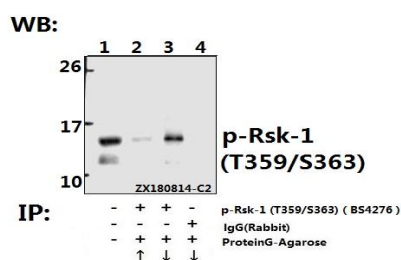
Western blot (WB) analysis of p-Rsk-1 (T359/S363) pAb at 1:2000 dilution

Lane1:HEK293T whole cell lysate(40ug)

Lane2:HEK293T treated with EGF(100ng/ml,30 minutes) whole cell lysate(40ug)



Immunofluorescence analysis of CT26 cells using Rsk-1 (phospho-T359/S363) antibody at dilution of 1:50.



Immunoprecipitation of HepG2 cell lysate using p-Rsk-1 (T359/S363) pAb (Sepharose Bead Conjugate) #BD0048(lane 2 and lane 3) and Nonspecific IgG Control (Sepharose Bead Conjugate) #BD0048 (lane 4) .Lane 1 is 30% input. The western blot was probed using p-Rsk-1 (T359/S363) #BS4276. “↑”(supernatant) ; “↓”(deposition)

### Note:

For research use only, not for use in diagnostic procedure.

### Bioworld Technology, Inc.

Add: 1660 South Highway 100, Suite 500 St. Louis Park, MN 55416, USA.

Email: [info@bioworld.com](mailto:info@bioworld.com)

Tel: 6123263284

Fax: 6122933841

### Bioworld technology, co. Ltd.

Add: No 9, weidi road Qixia District Nanjing, 210046, P. R. China.

Email: [info@biogot.com](mailto:info@biogot.com)

Tel: 0086-025-68037686

Fax: 0086-025-68035151



## PRODUCT DATA SHEET

Bioworld Technology, Inc.

---

---

### **Bioworld Technology, Inc.**

**Add:** 1660 South Highway 100, Suite 500 St. Louis Park,  
MN 55416, USA.

**Email:** [info@bioworld.com](mailto:info@bioworld.com)

**Tel:** 6123263284

**Fax:** 6122933841

### **Bioworld technology, co. Ltd.**

**Add:** No 9, weidi road Qixia District Nanjing, 210046,  
P. R. China.

**Email:** [info@biogot.com](mailto:info@biogot.com)

**Tel:** 0086-025-68037686

**Fax:** 0086-025-68035151