

## PTEN (phospho-S380/T382/T383) polyclonal antibody

Catalog: BS4161

Host: Rabbit

Reactivity: Human, Mouse, Rat

### Background:

As human tumors progress to advanced stages, one genetic alteration that occurs at high frequency is a loss of heterozygosity (LOH) at chromosome 10q23. Mapping of homozygous deletions on this chromosome led to the isolation of the PTEN gene, also designated MMAC1 (for mutated in multiple advanced cancers) and TEP1. This candidate tumor suppressor gene exhibits a high frequency of mutations in human glioblastomas and is also mutated in other cancers, including sporadic brain, breast, kidney and prostate cancers. PTEN has been associated with Cowden disease, an autosomal dominant cancer predisposition syndrome. The PTEN gene product is a putative protein tyrosine phosphatase that is localized to the cytoplasm, and it shares extensive homology with the cytoskeletal proteins tensin and auxilin. Gene transfer studies have indicated that the phosphatase domain of PTEN is essential for growth suppression of glioma cells.

### Product:

Rabbit IgG, 1mg/ml in PBS with 0.02% sodium azide, 50% glycerol, pH7.2

### Molecular Weight:

~ 47, 54 kDa

### Swiss-Prot:

P60484

### Purification&Purity:

The antibody was affinity-purified from rabbit antiserum by affinity-chromatography using epitope-specific immunogen and the purity is > 95% (by SDS-PAGE).

### Applications:

WB: 1:500~1:1000

IHC: 1:50~1:200

### Storage&Stability:

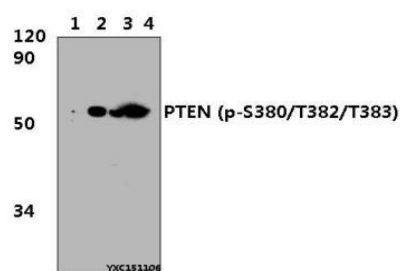
Store at 4 °C short term. Aliquot and store at -20 °C long

term. Avoid freeze-thaw cycles.

### Specificity:

p-PTEN (S380/T382/T383) polyclonal antibody detects endogenous levels of PTEN protein only when phosphorylated at Ser380/T382/T383.

### DATA:

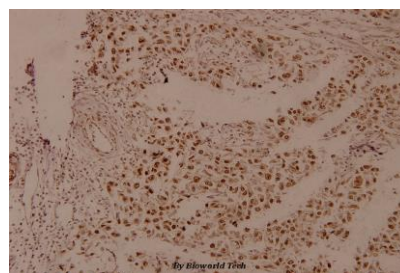


Western blot (WB) analysis of PTEN (p-S380/T382/T383) polyclonal antibody at 1:1000 dilution

Lane1:Hela whole cell lysate(30µg)

Lane2:Hela treated with PMA(60ng/ml, 30min) whole cell lysate(30µg)

Lane3:H9C2 whole cell lysate(30µg) Lane4:H9C2 treated with PMA(60ng/ml, 30min) whole cell lysate(30µg)



Immunohistochemistry (IHC) analyzes of p-PTEN (S380/T382/T383) pAb in paraffin-embedded human breast carcinoma tissue at 1:100.

### Note:

For research use only, not for use in diagnostic procedure.

### Bioworld Technology, Inc.

Add: 1660 South Highway 100, Suite 500 St. Louis Park, MN 55416, USA.

Email: [info@bioworld.com](mailto:info@bioworld.com)

Tel: 6123263284

Fax: 6122933841

### Bioworld technology, co. Ltd.

Add: No 9, weidi road Qixia District Nanjing, 210046, P. R. China.

Email: [info@biogot.com](mailto:info@biogot.com)

Tel: 0086-025-68037686

Fax: 0086-025-68035151