

PDPK1 (phospho-S241) polyclonal antibody

Catalog: BS4155

Host: Rabbit

Reactivity: Human, Mouse, Rat

BackGround:

PDK1 (3 Phosphoinositide Dependent Protein Kinase 1) phosphorylates AGC kinases. PDK1 activates conventional PKC and PKC zeta through phosphorylation of critical threonine residues in the activation loop. PDK1 also phosphorylates Protein Kinase B (PKB) at threonine 308 in the presence of hosphatidylinositol-3,4,5-trisphosphate. Active Akt inactivates Glycogen Synthase Kinase 3 (GSK3), eventually leading to the dephosphorylation and activation of glycogen synthase, and the stimulation of glycogen synthesis. Because of the role that PDK plays in insulin-induced glycogen synthesis and PKC activation, it is a potentially important target for metabolic drug research.

Product:

Rabbit IgG, 1mg/ml in PBS with 0.02% sodium azide, 50% glycerol, pH7.2

Molecular Weight:

~ 63 kDa

Swiss-Prot:

O15530

Purification&Purity:

The antibody was affinity-purified from rabbit antiserum by affinity-chromatography using epitope-specific immunogen and the purity is > 95% (by SDS-PAGE).

Applications:

WB: 1:500~1:1000

IHC: 1:50~1:200

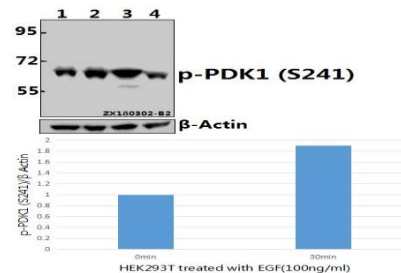
Storage&Stability:

Store at 4 °C short term. Aliquot and store at -20 °C long term. Avoid freeze-thaw cycles.

Specificity:

p-PDPK1 (S241) polyclonal antibody detects endogenous levels of PDPK1 protein when phosphorylated at Ser241.

DATA:



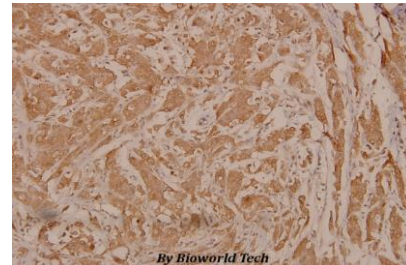
Western blot (WB) analysis of p-PDK1 (S241) pAb at 1:1000 dilution

Lane1:HEK293T whole cell lysate(40ug)

Lane2:HEK293T treated with EGF(100ng/ml,30 minutes) whole cell lysate(40ug)

Lane3:C6 whole cell lysate(40ug)

Lane4:CT26 whole cell lysate(40ug)



Immunohistochemistry (IHC) analyzes of p-PDPK1 (S241) pAb in paraffin-embedded human breast carcinoma tissue at 1:100.

Note:

For research use only, not for use in diagnostic procedure.

Bioworld Technology, Inc.

Add: 1660 South Highway 100, Suite 500 St. Louis Park, MN 55416, USA.

Email: info@bioworld.com

Tel: 6123263284

Fax: 6122933841

Bioworld technology, co. Ltd.

Add: No 9, weidi road Qixia District Nanjing, 210046, P. R. China.

Email: info@biogot.com

Tel: 0086-025-68037686

Fax: 0086-025-68035151