

## GRB7 Rabbit monoclonal antibody

Catalog: BS40967

Host: Rabbit

Reactivity: Human Mouse Rat

**BackGround:**

Interacts with the cytoplasmic domain of the epidermal growth factor receptor which is then inhibited. The interaction is mediated by the SH2 domain. Also binds to ERBB2.

**Product:**

Rabbit IgG, 1mg/ml in PBS with 0.02% sodium azide, 50% glycerol, pH7.2.

**Molecular Weight:**

60kDa

**Swiss-Prot:**

Q14451

**Purification&Purity:**

Affinity-chromatography

**Applications:**

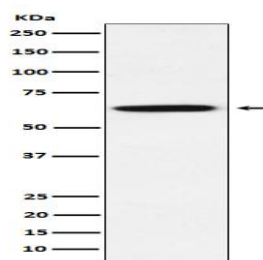
WB 1:1000~1:5000 IHC 1:100~1:500

**Storage&Stability:**

Store at 4 °C short term. Aliquot and store at -20 °C long term. Avoid freeze-thaw cycles.

**Specificity:**

GRB7 Antibody detects endogenous levels of total GRB7

**DATA:**

Western blot analysis of GRB7 expression in A431 cell lysate.

**Note:**

For research use only, not for use in diagnostic procedure.

**Bioworld Technology, Inc.**

Add: 1660 South Highway 100, Suite 500 St. Louis Park, MN 55416, USA.

Email: [info@bioworld.com](mailto:info@bioworld.com)

Tel: 6123263284

Fax: 6122933841

**Bioworld technology, co. Ltd.**

Add: No 9, weidi road Qixia District Nanjing, 210046, P. R. China.

Email: [info@biogol.com](mailto:info@biogol.com)

Tel: 0086-025-68037686

Fax: 0086-025-68035151