

## ErbB2/HER2 (phospho-Y1221/Y1222) polyclonal antibody

Catalog: BS4089

Host: Rabbit

Reactivity: Human, Mouse, Rat

### BackGround:

The EGF receptor family comprises several related receptor tyrosine kinases that are frequently overexpressed in a variety of carcinomas. Members of this receptor family include EGFR (HER1), Neu (ErbB-2, HER2), ErbB-3 (HER3), and ErbB-4 (HER4), which form either homodimers or heterodimers upon ligand binding. Neu, a glycoprotein, undergoes transactivation upon hetero-dimerization with other EGF receptor family members. Neu heterodimerization with ErbB-3 recruits hergulin, which induces phosphoinositide (PI) 3-kinase activation. Activation of Neu potentiates tumor cell motility and protease secretion and invasion, and also modulates cell cycle checkpoint function, DNA repair and apoptotic responses.

### Product:

Rabbit IgG, 1mg/ml in PBS with 0.02% sodium azide, 50% glycerol, pH7.2

### Molecular Weight:

~ 138,185 kDa

### Swiss-Prot:

P04626

### Purification&Purity:

The antibody was affinity-purified from rabbit antiserum by affinity-chromatography using epitope-specific immunogen and the purity is > 95% (by SDS-PAGE).

### Applications:

IHC: 1:50~1:200

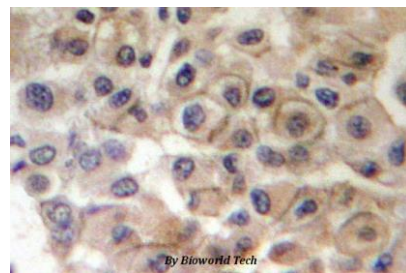
### Storage&Stability:

Store at 4 °C short term. Aliquot and store at -20 °C long term. Avoid freeze-thaw cycles.

### Specificity:

p-ErbB2/HER2 (Y1221/Y1222) polyclonal antibody detects endogenous levels of ErbB2/HER2 protein only when phosphorylated at Tyr1221 and Tyr1222.

### DATA:



Immunohistochemistry (IHC) analyzes of p-HER2/Neu (Y1221/Y1222) pAb in paraffin-embedded human breast carcinoma tissue.

### Note:

For research use only, not for use in diagnostic procedure.

### Bioworld Technology, Inc.

Add: 1660 South Highway 100, Suite 500 St. Louis Park, MN 55416, USA.

Email: [info@bioworld.com](mailto:info@bioworld.com)

Tel: 6123263284

Fax: 6122933841

### Bioworld technology, co. Ltd.

Add: No 9, weidi road Qixia District Nanjing, 210046, P. R. China.

Email: [info@biogot.com](mailto:info@biogot.com)

Tel: 0086-025-68037686

Fax: 0086-025-68035151