

**SLC9A1 Rabbit monoclonal antibody**

Catalog: BS40888

Host: Rabbit

Reactivity: Human

**BackGround:**

Involved in pH regulation to eliminate acids generated by active metabolism or to counter adverse environmental conditions. Major proton extruding system driven by the inward sodium ion chemical gradient. Plays an important role in signal transduction.

**Product:**

Rabbit IgG, 1mg/ml in PBS with 0.02% sodium azide, 50% glycerol, pH7.2.

**Molecular Weight:**

130kDa

**Swiss-Prot:**

P19634

**Purification&Purity:**

Affinity-chromatography

**Applications:**

WB 1:500~1:2000

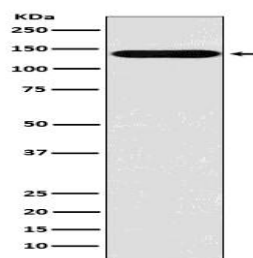
**Storage&Stability:**

Store at 4 °C short term. Aliquot and store at -20 °C long

term. Avoid freeze-thaw cycles.

**Specificity:**

Sodium / Hydrogen Exchanger 1 Antibody detects endogenous levels of total Sodium / Hydrogen Exchanger 1

**DATA:**

Western blot analysis of Sodium / Hydrogen Exchanger 1 expression in MOLT4 cell lysate.

**Note:**

For research use only, not for use in diagnostic procedure.

**Bioworld Technology, Inc.**

Add: 1660 South Highway 100, Suite 500 St. Louis Park,  
MN 55416, USA.

Email: [info@bioworld.com](mailto:info@bioworld.com)

Tel: 6123263284

Fax: 6122933841

**Bioworld technology, co. Ltd.**

Add: No 9, weidi road Qixia District Nanjing, 210046,  
P. R. China.

Email: [info@biogol.com](mailto:info@biogol.com)

Tel: 0086-025-68037686

Fax: 0086-025-68035151