

## GSK3 $\alpha$ / $\beta$ (phospho-Y279/216) polyclonal antibody

Catalog: BS4083

Host: Rabbit

Reactivity: Human, Mouse, Rat

### Background:

Glycogen synthase kinase-3  $\alpha$  and  $\beta$  (GSK-3 $\alpha$ ,  $\beta$ ) are serine/threonine kinases that regulate metabolic enzymes and transcription factors, which are responsible for coordinating processes such as glycogen synthesis and cell adhesion. GSK-3 $\beta$  activity is also required for nuclear activity of Rel dimers, which mediate an anti-apoptotic response to TNF $\alpha$  in mice. GSK-3 catalytic kinase activity is controlled through differential phosphorylation of serine/threonine residues, which have an inhibitory effect, and tyrosine residues, which have an activating effect. Growth factor stimulation of mammalian cells expressing GSK-3 $\alpha$  and GSK-3 $\beta$  induces phosphorylation of Ser 21 and Ser 9, respectively through a phosphatidylinositol 3-kinase (PI 3-kinase)-protein kinase B (PKB) dependent pathway, thereby enhancing proliferative signals. Additionally, GSK-3 physically associates with cAMP-dependent protein kinase A (PKA), which phosphorylates Ser 21 of GSK-3 $\alpha$  or Ser 9 of GSK-3 $\beta$  and inactivates both forms

### Product:

Rabbit IgG, 1mg/ml in PBS with 0.02% sodium azide, 50% glycerol, pH7.2

### Molecular Weight:

~ 46,51 kDa

### Swiss-Prot:

P49840/P49841

### Purification&Purity:

The antibody was affinity-purified from rabbit antiserum by affinity-chromatography using epitope-specific immunogen and the purity is > 95% (by SDS-PAGE).

### Applications:

WB: 1:500~1:2000

IHC: 1:50~1:200

### Storage&Stability:

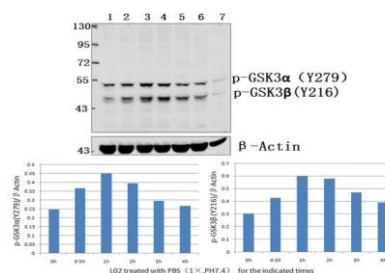
Store at 4  $^{\circ}$ C short term. Aliquot and store at -20  $^{\circ}$ C long

term. Avoid freeze-thaw cycles.

### Specificity:

p-GSK3 $\alpha$ / $\beta$  (Y279/216) polyclonal antibody detects endogenous levels of GSK3 $\alpha$ / $\beta$  protein only when phosphorylated at Tyr279/216

### DATA:



Western blot (WB) analysis of GSK3 $\alpha$ / $\beta$  (phospho-Y279/216) polyclonal antibody at 1:2000 dilution

Lane1:L02 whole cell lysate

Lane2:L02 treated with PBS(1 $\times$ PBS,PH7.4) for 30min whole cell lysate

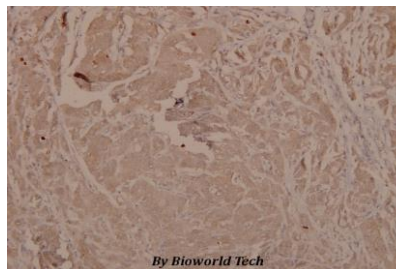
Lane3:L02 treated with PBS(1 $\times$ PBS,PH7.4) for 60min whole cell lysate

Lane4:L02 treated with PBS(1 $\times$ PBS,PH7.4) for 120min whole cell lysate

Lane5:L02 treated with PBS(1 $\times$ PBS,PH7.4) for 180min whole cell lysate

Lane6:L02 treated with PBS(1 $\times$ PBS,PH7.4) for 240min whole cell lysate

Lane7:C6 whole cell lysate



Immunohistochemistry (IHC) analyzes of p-GSK3 $\alpha$ / $\beta$  (Y279/216) pAb in paraffin-embedded human breast carcinoma tissue at 1:100.

### Note:

For research use only, not for use in diagnostic procedure.

### Bioworld Technology, Inc.

Add: 1660 South Highway 100, Suite 500 St. Louis Park, MN 55416, USA.

Email: [info@bioworld.com](mailto:info@bioworld.com)

Tel: 6123263284

Fax: 6122933841

### Bioworld technology, co. Ltd.

Add: No 9, weidi road Qixia District Nanjing, 210046, P. R. China.

Email: [info@biogot.com](mailto:info@biogot.com)

Tel: 0086-025-68037686

Fax: 0086-025-68035151



## PRODUCT DATA SHEET

Bioworld Technology, Inc.

---

---

### **Bioworld Technology, Inc.**

**Add:** 1660 South Highway 100, Suite 500 St. Louis Park,  
MN 55416, USA.

**Email:** [info@bioworld.com](mailto:info@bioworld.com)

**Tel:** 6123263284

**Fax:** 6122933841

### **Bioworld technology, co. Ltd.**

**Add:** No 9, weidi road Qixia District Nanjing, 210046,  
P. R. China.

**Email:** [info@biogot.com](mailto:info@biogot.com)

**Tel:** 0086-025-68037686

**Fax:** 0086-025-68035151