

WSTF Rabbit monoclonal antibody

Catalog: BS40806

Host: Rabbit

Reactivity: Human Mouse Rat

BackGround:

Atypical tyrosine-protein kinase that plays a central role in chromatin remodeling and acts as a transcription regulator. Involved in DNA damage response by phosphorylating 'Tyr-142' of histone H2AX (H2AXY142ph). H2AXY142ph plays a central role in DNA repair and acts as a mark that distinguishes between apoptotic and repair responses to genotoxic stress.

Product:

Rabbit IgG, 1mg/ml in PBS with 0.02% sodium azide, 50% glycerol, pH7.2.

Molecular Weight:

185kDa

Swiss-Prot:

Q9UIG0

Purification&Purity:

Affinity-chromatography

Applications:

WB 1:500~1:2000 FC 1:50

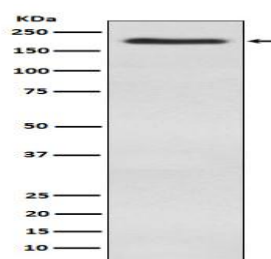
Storage&Stability:

Store at 4 °C short term. Aliquot and store at -20 °C long term. Avoid freeze-thaw cycles.

Specificity:

WSTF Antibody detects endogenous levels of total WSTF

DATA:



Western blot analysis of WSTF expression in SH-SY5Y cell lysate.

Note:

For research use only, not for use in diagnostic procedure.

Bioworld Technology, Inc.

Add: 1660 South Highway 100, Suite 500 St. Louis Park,
MN 55416, USA.

Email: info@bioworld.com

Tel: 6123263284

Fax: 6122933841

Bioworld technology, co. Ltd.

Add: No 9, weidi road Qixia District Nanjing, 210046,
P. R. China.

Email: info@biogol.com

Tel: 0086-025-68037686

Fax: 0086-025-68035151