

NCX1 Rabbit monoclonal antibody

Catalog: BS40768

Host: Rabbit

Reactivity: Human Mouse Rat

BackGround:

Rapidly transports Ca^{2+} during excitation-contraction coupling. Ca^{2+} is extruded from the cell during relaxation so as to prevent overloading of intracellular stores.

Product:

Rabbit IgG, 1mg/ml in PBS with 0.02% sodium azide, 50% glycerol, pH7.2.

Molecular Weight:

108kDa

Swiss-Prot:

P32418

Purification&Purity:

Affinity-chromatography

Applications:

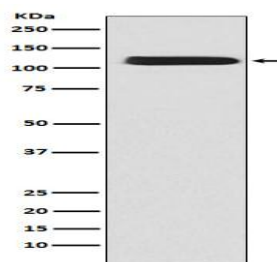
WB 1:500~1:2000

Storage&Stability:

Store at 4 °C short term. Aliquot and store at -20 °C long term. Avoid freeze-thaw cycles.

Specificity:

NCX1 Antibody detects endogenous levels of total NCX1

DATA:

Western blot analysis of NCX1 expression in K562 cell lysate.

Note:

For research use only, not for use in diagnostic procedure.

Bioworld Technology, Inc.

Add: 1660 South Highway 100, Suite 500 St. Louis Park, MN 55416, USA.

Email: info@bioworld.com

Tel: 6123263284

Fax: 6122933841

Bioworld technology, co. Ltd.

Add: No 9, weidi road Qixia District Nanjing, 210046, P. R. China.

Email: info@biogot.com

Tel: 0086-025-68037686

Fax: 0086-025-68035151