

Liver Carboxylesterase 1 Rabbit monoclonal antibody

Catalog: BS40730

Host: Rabbit

Reactivity: Human Mouse Rat

BackGround:

Involved in the detoxification of xenobiotics and in the activation of ester and amide prodrugs. Hydrolyzes aromatic and aliphatic esters, but has no catalytic activity toward amides or a fatty acyl-CoA ester. Hydrolyzes the methyl ester group of cocaine to form benzoylecgonine.

Product:

Rabbit IgG, 1mg/ml in PBS with 0.02% sodium azide, 50% glycerol, pH7.2.

Molecular Weight:

55kDa

Swiss-Prot:

P23141

Purification&Purity:

Affinity-chromatography

Applications:

WB 1:1000~1:5000 IP 1:40 FC 1:100

Storage&Stability:

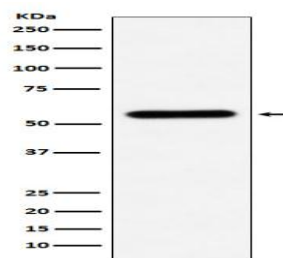
Store at 4 °C short term. Aliquot and store at -20 °C long

term. Avoid freeze-thaw cycles.

Specificity:

Liver Carboxylesterase 1 Antibody detects endogenous levels of total Liver Carboxylesterase 1

DATA:



Western blot analysis of Liver Carboxylesterase 1 expression in U937 cell lysate.

Note:

For research use only, not for use in diagnostic procedure.

Bioworld Technology, Inc.

Add: 1660 South Highway 100, Suite 500 St. Louis Park, MN 55416, USA.

Email: info@bioworld.com

Tel: 6123263284

Fax: 6122933841

Bioworld technology, co. Ltd.

Add: No 9, weidi road Qixia District Nanjing, 210046, P. R. China.

Email: info@biogol.com

Tel: 0086-025-68037686

Fax: 0086-025-68035151