

## ACE1 Rabbit monoclonal antibody

Catalog: BS40671

Host: Rabbit

Reactivity: Human Mouse

### BackGround:

Converts angiotensin I to angiotensin II by release of the terminal His-Leu, this results in an increase of the vaso-constrictor activity of angiotensin. Also able to inactivate bradykinin, a potent vasodilator. Has also a glycosidase activity which releases GPI-anchored proteins from the membrane by cleaving the mannose linkage in the GPI moiety.

### Product:

Rabbit IgG, 1mg/ml in PBS with 0.02% sodium azide, 50% glycerol, pH7.2.

### Molecular Weight:

195kDa

### Swiss-Prot:

P12821

### Purification&Purity:

Affinity-chromatography

### Applications:

WB 1:500~1:1000 IHC 1:50~1:200 FC 1:30

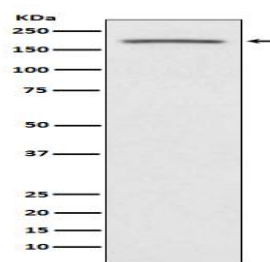
### Storage&Stability:

Store at 4 °C short term. Aliquot and store at -20 °C long term. Avoid freeze-thaw cycles.

### Specificity:

ACE1 Antibody detects endogenous levels of total ACE1

### DATA:



Western blot analysis of ACE1 expression in human fetal kidney lysate.

### Note:

For research use only, not for use in diagnostic procedure.

### Bioworld Technology, Inc.

Add: 1660 South Highway 100, Suite 500 St. Louis Park, MN 55416, USA.

Email: [info@bioworld.com](mailto:info@bioworld.com)

Tel: 6123263284

Fax: 6122933841

### Bioworld technology, co. Ltd.

Add: No 9, weidi road Qixia District Nanjing, 210046, P. R. China.

Email: [info@biogol.com](mailto:info@biogol.com)

Tel: 0086-025-68037686

Fax: 0086-025-68035151