

## Glycophorin A (CD235a) Rabbit monoclonal antibody

Catalog: BS40657

Host: Rabbit

Reactivity: Human

**BackGround:**

Glycophorin A is the major intrinsic membrane protein of the erythrocyte. The N-terminal glycosylated segment, which lies outside the erythrocyte membrane, has MN blood group receptors. Appears to be important for the function of SLC4A1 and is required for high activity of SLC4A1.

**Product:**

Rabbit IgG, 1mg/ml in PBS with 0.02% sodium azide, 50% glycerol, pH7.2.

**Molecular Weight:**

38kDa

**Swiss-Prot:**

P02724

**Purification&Purity:**

Affinity-chromatography

**Applications:**

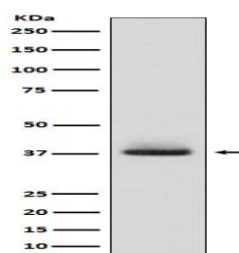
WB 1:500~1:1000 IHC 1:100~1:500 FC 1:50

**Storage&Stability:**

Store at 4 °C short term. Aliquot and store at -20 °C long term. Avoid freeze-thaw cycles.

**Specificity:**

Glycophorin A (CD235a) Antibody detects endogenous levels of total Glycophorin A (CD235a)

**DATA:**

Western blot analysis of Glycophorin A (CD235a) expression in human fetal liver lysate.

**Note:**

For research use only, not for use in diagnostic procedure.

**Bioworld Technology, Inc.**

Add: 1660 South Highway 100, Suite 500 St. Louis Park, MN 55416, USA.

Email: [info@bioworld.com](mailto:info@bioworld.com)

Tel: 6123263284

Fax: 6122933841

**Bioworld technology, co. Ltd.**

Add: No 9, weidi road Qixia District Nanjing, 210046, P. R. China.

Email: [info@biogol.com](mailto:info@biogol.com)

Tel: 0086-025-68037686

Fax: 0086-025-68035151