

## Clusterin Rabbit monoclonal antibody

Catalog: BS40654

Host: Rabbit

Reactivity: Human Mouse

### BackGround:

Clusterin (CLU, apolipoprotein J) is a multifunctional glycoprotein that is expressed ubiquitously in most tissues. Clusterin functions as a secreted chaperone protein that interacts with and stabilizes stress-induced proteins to prevent their precipitation. Research studies show that clusterin plays a protective role in Alzheimer's disease by sequestering amyloid  $\beta$ (1-40) peptides to form long-lived, stable complexes, which prevents amyloid fibril formation.

### Product:

Rabbit IgG, 1mg/ml in PBS with 0.02% sodium azide, 50% glycerol, pH7.2.

### Molecular Weight:

32-42, 65, 75kDa

### Swiss-Prot:

P10909

### Purification&Purity:

Affinity-chromatography

### Applications:

WB 1:500~1:2000 IHC 1:50~1:200

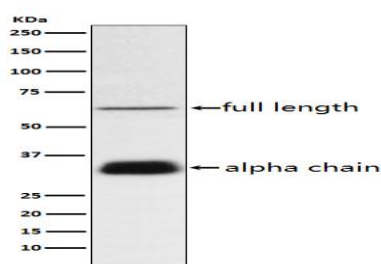
### Storage&Stability:

Store at 4 °C short term. Aliquot and store at -20 °C long term. Avoid freeze-thaw cycles.

### Specificity:

Clusterin Antibody detects endogenous levels of total Clusterin

### DATA:



Western blot analysis of Clusterin expression in human plasma lysate.

### Note:

For research use only, not for use in diagnostic procedure.

### Bioworld Technology, Inc.

Add: 1660 South Highway 100, Suite 500 St. Louis Park, MN 55416, USA.

Email: [info@bioworld.com](mailto:info@bioworld.com)

Tel: 6123263284

Fax: 6122933841

### Bioworld technology, co. Ltd.

Add: No 9, weidi road Qixia District Nanjing, 210046, P. R. China.

Email: [info@biogol.com](mailto:info@biogol.com)

Tel: 0086-025-68037686

Fax: 0086-025-68035151