

## Fascin Rabbit monoclonal antibody

Catalog: BS40653

Host: Rabbit

Reactivity: Human Mouse Rat

### BackGround:

Promotes cross-linkage of parallel actin filaments during the formation of cell protrusions (lamellipodia and filopodia), and therefore plays an important role in regulating cell migration. It has been reported that fascin may also regulate filopodia formation by a mechanism independent of its actin-bundling functions, though less is known about this mechanism of action.

### Product:

Rabbit IgG, 1mg/ml in PBS with 0.02% sodium azide, 50% glycerol, pH7.2.

### Molecular Weight:

54kDa

### Swiss-Prot:

Q16658

### Purification&Purity:

Affinity-chromatography

### Applications:

WB 1:1000~1:5000 IHC 1:50~1:200 ICC/IF 1:50~1:200  
IP 1:50 FC 1:100

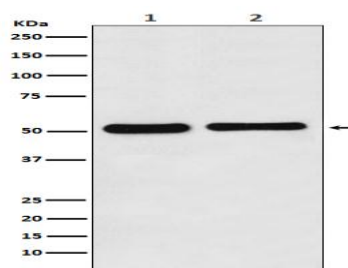
### Storage&Stability:

Store at 4 °C short term. Aliquot and store at -20 °C long term. Avoid freeze-thaw cycles.

### Specificity:

Fascin Antibody detects endogenous levels of total Fascin

### DATA:



Western blot analysis of Fascin expression in (1) K562 cell lysate; (2) Mouse kidney lysate.

### Note:

For research use only, not for use in diagnostic procedure.

### Bioworld Technology, Inc.

Add: 1660 South Highway 100, Suite 500 St. Louis Park,  
MN 55416, USA.

Email: [info@bioworld.com](mailto:info@bioworld.com)

Tel: 6123263284

Fax: 6122933841

### Bioworld technology, co. Ltd.

Add: No 9, weidi road Qixia District Nanjing, 210046,  
P. R. China.

Email: [info@biogol.com](mailto:info@biogol.com)

Tel: 0086-025-68037686

Fax: 0086-025-68035151