

## EGFR (phospho-S1046) polyclonal antibody

Catalog: BS4061

Host: Rabbit

Reactivity: Human

### Background:

EGFR (Epidermal growth factor receptor, ErbB-1) is a receptor tyrosine kinase (RTK) that is one of four members of the EGFR/ErbB family of receptor tyrosine kinases. EGFR plays a key role in the regulation of essential normal cellular processes and in the pathophysiology of hyperproliferative diseases such as cancer. Activation of the EGFR signaling pathway has been linked with increased cell proliferation, angiogenesis, metastasis and decreased apoptosis. Phosphorylation of EGFR at specific serine and threonine residues attenuates EGFR kinase activity. EGFR carboxy-terminal residues Ser1046 and Ser1047 are phosphorylated by CaM kinase II; mutation of either of these serines results in upregulated EGFR tyrosine autophosphorylation.

### Product:

Rabbit IgG, 1mg/ml in PBS with 0.02% sodium azide, 50% glycerol, pH7.2

### Molecular Weight:

~ 175 kDa

### Swiss-Prot:

P00533

### Purification&Purity:

The antibody was affinity-purified from rabbit antiserum by affinity-chromatography using epitope-specific immunogen and the purity is > 95% (by SDS-PAGE).

### Applications:

WB: 1:500~1:1000

IHC: 1:50~1:200

### Storage&Stability:

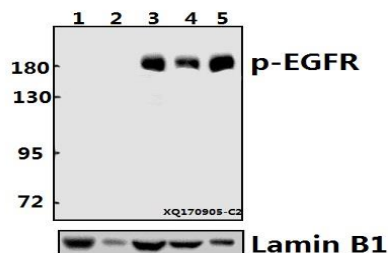
Store at 4 °C short term. Aliquot and store at -20 °C long term. Avoid freeze-thaw cycles.

### Specificity:

EGFR (phospho-S1046) polyclonal antibody detects endogenous levels of EGFR protein only when phosphory-

lated at serine 1046 (removal of the signal peptide).

### DATA:



Western blot (WB) analysis of EGFR (phospho-S1046) polyclonal antibody at 1:500 dilution

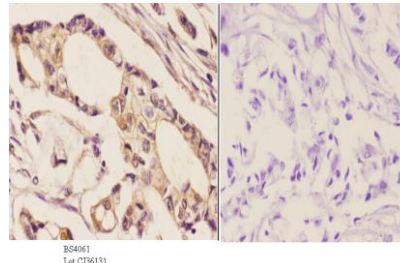
Lane1:The Lung tissue lysate of Mouse(40ug)

Lane2:The Lung tissue lysate of Rat(40ug)

Lane3:A549 whole cell lysate(40ug)

Lane4:SKOV3 whole cell lysate(20ug)

Lane5:HCC827 whole cell lysate(10ug)



Immunohistochemistry (IHC) analyzes of p-EGFR (S1046) pAb in paraffin-embedded human breast carcinoma tissue at 1:50, showing cell membrane and nucleus staining. Negative control (the right) Using PBS instead of primary antibody, secondary antibody is Goat Anti-Rabbit IgG-biotin followed by avidin-peroxidase.

### Note:

For research use only, not for use in diagnostic procedure.

### Bioworld Technology, Inc.

Add: 1660 South Highway 100, Suite 500 St. Louis Park, MN 55416, USA.

Email: [info@bioworld.com](mailto:info@bioworld.com)

Tel: 6123263284

Fax: 6122933841

### Bioworld technology, co. Ltd.

Add: No 9, weidi road Qixia District Nanjing, 210046, P. R. China.

Email: [info@biogot.com](mailto:info@biogot.com)

Tel: 0086-025-68037686

Fax: 0086-025-68035151