

## Clathrin heavy chain Rabbit monoclonal antibody

Catalog: BS40530

Host: Rabbit

Reactivity: Human Mouse Rat

### BackGround:

Clathrin heavy chain proteins are composed of several functional domains, including a carboxy-terminal region that permits interaction with other heavy chain proteins within a triskelion, and a globular amino-terminal region that associates with other vesicle proteins. Adaptor proteins, such as AP2, epsin and EPS15, are responsible for the recruitment of vesicle proteins to sites of pit formation and the assembly of the clathrin-coated vesicle.

### Product:

Rabbit IgG, 1mg/ml in PBS with 0.02% sodium azide, 50% glycerol, pH7.2.

### Molecular Weight:

191kDa

### Swiss-Prot:

Q00610/P53675

### Purification&Purity:

Affinity-chromatography

### Applications:

WB 1:1000~1:5000 IHC 1:50~1:200

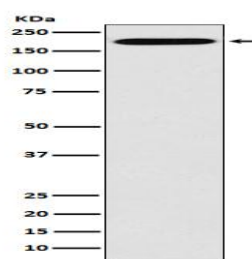
### Storage&Stability:

Store at 4 °C short term. Aliquot and store at -20 °C long term. Avoid freeze-thaw cycles.

### Specificity:

Clathrin heavy chain Antibody detects endogenous levels of total Clathrin heavy chain

### DATA:



Western blot analysis of Clathrin heavy chain expression in Hela cell lysate.

### Note:

For research use only, not for use in diagnostic procedure.

### Bioworld Technology, Inc.

Add: 1660 South Highway 100, Suite 500 St. Louis Park, MN 55416, USA.

Email: [info@bioworld.com](mailto:info@bioworld.com)

Tel: 6123263284

Fax: 6122933841

### Bioworld technology, co. Ltd.

Add: No 9, weidi road Qixia District Nanjing, 210046, P. R. China.

Email: [info@biogot.com](mailto:info@biogot.com)

Tel: 0086-025-68037686

Fax: 0086-025-68035151