

**SDHB Rabbit monoclonal antibody**

Catalog: BS40529

Host: Rabbit

Reactivity: Human Mouse Rat

**BackGround:**

Iron-sulfur protein (IP) subunit of succinate dehydrogenase (SDH) that is involved in complex II of the mitochondrial electron transport chain and is responsible for transferring electrons from succinate to ubiquinone (co-enzyme Q).

**Product:**

Rabbit IgG, 1mg/ml in PBS with 0.02% sodium azide, 50% glycerol, pH7.2.

**Molecular Weight:**

32kDa

**Swiss-Prot:**

P21912

**Purification&Purity:**

Affinity-chromatography

**Applications:**

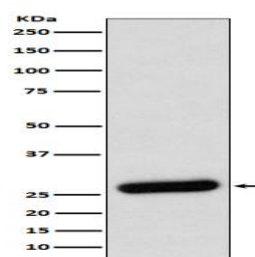
WB 1:500~1:2000 IHC 1:50~1:200 IP 1:50 FC 1:50

**Storage&Stability:**

Store at 4 °C short term. Aliquot and store at -20 °C long term. Avoid freeze-thaw cycles.

**Specificity:**

SDHB Antibody detects endogenous levels of total SDHB

**DATA:**

Western blot analysis of SDHB expression in A431 cell lysate.

**Note:**

For research use only, not for use in diagnostic procedure.

**Bioworld Technology, Inc.**

Add: 1660 South Highway 100, Suite 500 St. Louis Park,  
MN 55416, USA.

Email: [info@bioworld.com](mailto:info@bioworld.com)

Tel: 6123263284

Fax: 6122933841

**Bioworld technology, co. Ltd.**

Add: No 9, weidi road Qixia District Nanjing, 210046,  
P. R. China.

Email: [info@biogol.com](mailto:info@biogol.com)

Tel: 0086-025-68037686

Fax: 0086-025-68035151