

## Cdc25C (phospho-S216) polyclonal antibody

Catalog: BS4035

Host: Rabbit

Reactivity: Human, Mouse, Rat

### Background:

Cyclin dependent kinases are positively regulated by association with cyclins and negatively regulated by binding to inhibitory subunits. The activity of cyclin dependent kinases is also regulated by the phosphorylation status, which is controlled by the antagonistic action of Wee1 kinase and CDC25 phosphatases. Three CDC25 genes are present in human cells: CDC25A, CDC25B, and CDC25C. These three genes function at different phases of the cell cycle. Whereas CDC25A and CDC25B are expressed throughout the cell cycle, with peak expression in G1 for CDC25A and in both G1 S phase and G2 for CDC25B, CDC25C is predominantly expressed in G2.

### Product:

Rabbit IgG, 1mg/ml in PBS with 0.02% sodium azide, 50% glycerol, pH7.2

### Molecular Weight:

~ 60 kDa

### Swiss-Prot:

P30307

### Purification&Purity:

The antibody was affinity-purified from rabbit antiserum by affinity-chromatography using epitope-specific immunogen and the purity is > 95% (by SDS-PAGE).

### Applications:

WB: 1:500~1:1000

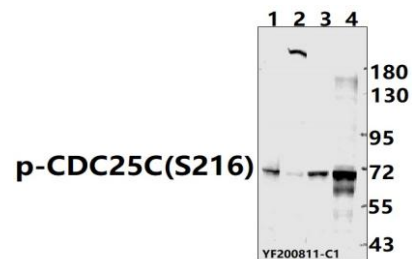
### Storage&Stability:

Store at 4 °C short term. Aliquot and store at -20 °C long term. Avoid freeze-thaw cycles.

### Specificity:

p-CDC25C (S216) polyclonal antibody detects endogenous levels of CDC25C protein only when phosphorylated at Ser216.

### DATA:



Western blot (WB) analysis of p-CDC25C(S216) pAb at 1:500 dilution

Lane1:PC12 whole cell lysate(40ug)

Lane2:CT-26 whole cell lysate(40ug)

Lane3:HeLa whole cell lysate(40ug)

Lane4:HEK293T whole cell lysate(40ug)

### Note:

For research use only, not for use in diagnostic procedure.

### Bioworld Technology, Inc.

Add: 1660 South Highway 100, Suite 500 St. Louis Park, MN 55416, USA.

Email: [info@bioworld.com](mailto:info@bioworld.com)

Tel: 6123263284

Fax: 6122933841

### Bioworld technology, co. Ltd.

Add: No 9, weidi road Qixia District Nanjing, 210046, P. R. China.

Email: [info@biogot.com](mailto:info@biogot.com)

Tel: 0086-025-68037686

Fax: 0086-025-68035151