

## E2F2 Rabbit monoclonal antibody

Catalog: BS40280

Host: Rabbit

Reactivity: Human Mouse Rat

### BackGround:

Play an important role in the negative regulation of cell proliferation. Functional inactivation of Rb can be mediated either through mutation or as a consequence of interaction with DNA tumor virus-encoded proteins. The DRTF1/E2F complex functions in the control of cell-cycle progression from G1 to S phase. E2F2 binds specifically to RB1 in a cell-cycle dependent manner.

### Product:

Rabbit IgG, 1mg/ml in PBS with 0.02% sodium azide, 50% glycerol, pH7.2.

### Molecular Weight:

47kDa

### Swiss-Prot:

Q14209

### Purification&Purity:

Affinity-chromatography

### Applications:

WB 1:1000~1:2000 FC 1:100

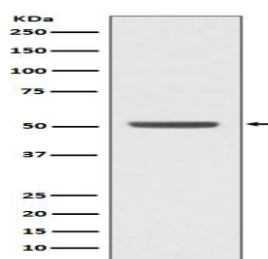
### Storage&Stability:

Store at 4 °C short term. Aliquot and store at -20 °C long term. Avoid freeze-thaw cycles.

### Specificity:

E2F2 Antibody detects endogenous levels of E2F2

### DATA:



Western blot analysis of E2F2 expression in K562 cell lysate.

### Note:

For research use only, not for use in diagnostic procedure.

### Bioworld Technology, Inc.

Add: 1660 South Highway 100, Suite 500 St. Louis Park, MN 55416, USA.

Email: [info@bioworld.com](mailto:info@bioworld.com)

Tel: 6123263284

Fax: 6122933841

### Bioworld technology, co. Ltd.

Add: No 9, weidi road Qixia District Nanjing, 210046, P. R. China.

Email: [info@biogol.com](mailto:info@biogol.com)

Tel: 0086-025-68037686

Fax: 0086-025-68035151