

RAD18 Rabbit monoclonal antibody

Catalog: BS40224

Host: Rabbit

Reactivity: Human Mouse Rat

BackGround:

RAD18 a structural maintenance of chromosomes (SMC) protein involved in postreplication repair of UV-damaged DNA. Has ssDNA binding activity. Interacts with Rad6 through a conserved ring-finger motif. Rad6 is an ubiquitin-conjugating enzyme required for post-replication repair of damaged DNA.

Product:

Rabbit IgG, 1mg/ml in PBS with 0.02% sodium azide, 50% glycerol, pH7.2.

Molecular Weight:

70kDa

Swiss-Prot:

Q9NS91

Purification&Purity:

Affinity-chromatography

Applications:

WB 1:10000~1:20000 FC 1:20

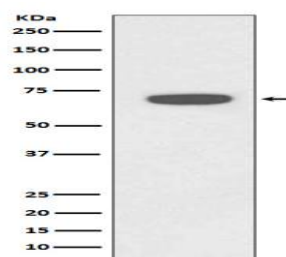
Storage&Stability:

Store at 4 °C short term. Aliquot and store at -20 °C long term. Avoid freeze-thaw cycles.

Specificity:

RAD18 Antibody detects endogenous levels of RAD18

DATA:



Western blot analysis of RAD18 expression in HeLa cell lysate.

Note:

For research use only, not for use in diagnostic procedure.

Bioworld Technology, Inc.

Add: 1660 South Highway 100, Suite 500 St. Louis Park, MN 55416, USA.

Email: info@bioworld.com

Tel: 6123263284

Fax: 6122933841

Bioworld technology, co. Ltd.

Add: No 9, weidi road Qixia District Nanjing, 210046, P. R. China.

Email: info@biogol.com

Tel: 0086-025-68037686

Fax: 0086-025-68035151