

Nestin Rabbit monoclonal antibody

Catalog: BS40206

Host: Rabbit

Reactivity: Human

BackGround:

May help to regulate cell structure and intracellular processes required for neural cell division and migration. Upon maturation of the brain, nestin expression is quickly down-regulated and replaced by expression of the neuro-filament proteins. Because nestin is expressed in both mature and precursor neuronal and glial cells, as well as in the developing brain and in the brain and spinal cord following damage, nestin is widely accepted as a marker of neural stem/progenitor cells.

Product:

Rabbit IgG, 1mg/ml in PBS with 0.02% sodium azide, 50% glycerol, pH7.2.

Molecular Weight:

kDa

Swiss-Prot:

P48681

Purification&Purity:

Affinity-chromatography

Applications:

IHC 1:50~1:200 ICC/IF 1:50~1:200

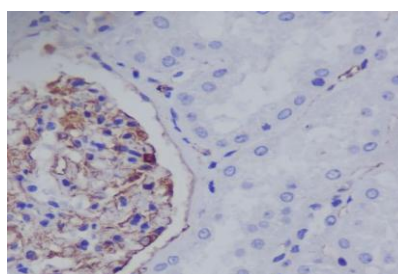
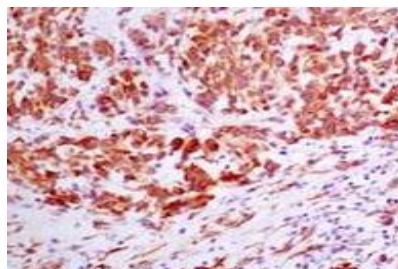
Storage&Stability:

Store at 4 °C short term. Aliquot and store at -20 °C long term. Avoid freeze-thaw cycles.

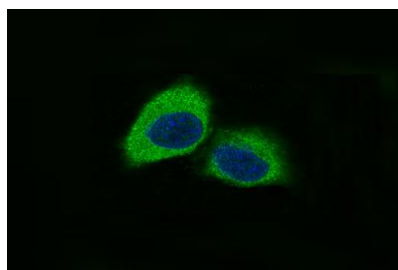
Specificity:

Nestin Antibody detects endogenous levels of Nestin

DATA:



Immunohistochemical analysis of paraffin-embedded human kidney, using Nestin Antibody.



Immunofluorescent analysis of PC12 cells, using Nestin Antibody.

Note:

For research use only, not for use in diagnostic procedure.

Bioworld Technology, Inc.

Add: 1660 South Highway 100, Suite 500 St. Louis Park, MN 55416, USA.

Email: info@bioworld.com

Tel: 6123263284

Fax: 6122933841

Bioworld technology, co. Ltd.

Add: No 9, weidi road Qixia District Nanjing, 210046, P. R. China.

Email: info@biogot.com

Tel: 0086-025-68037686

Fax: 0086-025-68035151