

## DAP Kinase 1 Rabbit monoclonal antibody

Catalog: BS40098

Host: Rabbit

Reactivity: Human Mouse Rat

### BackGround:

DAP (death associated protein) kinase and ZIP kinase are members of a novel protein kinase family, the members of which have the capacity to mediate apoptosis through their catalytic activities. DAP kinase (DAPK) contains a "death domain" and has been shown to mediate IFN- $\gamma$ -induced apoptosis. The introduction of DAPK into highly metastatic carcinoma clones lacking DAPK expression has been shown to result in the suppression of metastasis, thus linking suppression of apoptosis to metastasis.

### Product:

Rabbit IgG, 1mg/ml in PBS with 0.02% sodium azide, 50% glycerol, pH7.2.

### Molecular Weight:

~ 150 kDa

### Swiss-Prot:

P53355

### Purification&Purity:

Affinity-chromatography

### Applications:

WB 1:500~1:2000 IHC 1:50~1:200 ICC/IF 1:50~1:200

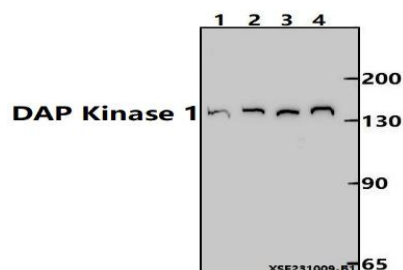
### Storage&Stability:

Store at 4 °C short term. Aliquot and store at -20 °C long term. Avoid freeze-thaw cycles.

### Specificity:

DAP Kinase 1 Antibody detects endogenous levels of total DAP Kinase 1

### DATA:



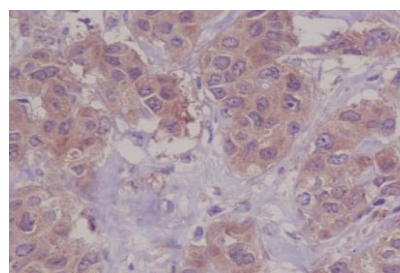
Western blot (WB) analysis of DAP Kinase 1 Rabbit monoclonal antibody at 1:500 dilution

Lane1:The Lung tissue lysate of Mouse(30ug)

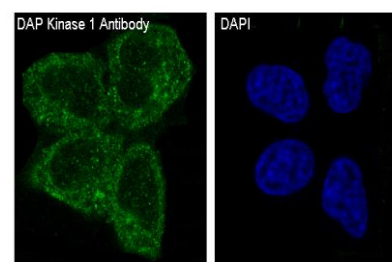
Lane2:HepG2 whole cell lysate(30ug)

Lane3:A549 whole cell lysate(30ug)

Lane4:Hela whole cell lysate(30ug)



Immunohistochemical analysis of paraffin-embedded human breast cancer, using DAP Kinase 1 Antibody.



Immunofluorescent analysis of Hela cells, using DAP Kinase 1 Antibody.

### Note:

For research use only, not for use in diagnostic procedure.

### Bioworld Technology, Inc.

Add: 1660 South Highway 100, Suite 500 St. Louis Park, MN 55416,USA.

Email: [info@bioworld.com](mailto:info@bioworld.com)

Tel: 6123263284

Fax: 6122933841

### Bioworld technology, co. Ltd.

Add: No 9, weidi road Qixia District Nanjing, 210046, P. R. China.

Email: [info@biogot.com](mailto:info@biogot.com)

Tel: 0086-025-68037686

Fax: 0086-025-68035151