

LEF-1 (F38) polyclonal antibody

Catalog: BS3974

Host: Rabbit

Reactivity: Human,Rat,Mouse

BackGround:

Transcription factor that binds DNA in a sequence-specific manner. Participates in the Wnt signaling pathway (By similarity). Activates transcription of target genes in the presence of CTNNB1 and EP300 (By similarity). PIAG antagonizes both Wnt-dependent and Wnt-independent activation by LEF1 (By similarity). TLE1, TLE2, TLE3 and TLE4 repress transactivation mediated by LEF1 and CTNNB1. Regulates T-cell receptor alpha enhancer function. Required for IL17A expressing gamma-delta T-cell maturation and development, via binding to regulator loci of BLK to modulate expression (By similarity). May play a role in hair cell differentiation and follicle morphogenesis (By similarity).

Product:

Rabbit IgG, 1mg/ml in PBS with 0.02% sodium azide, 50% glycerol, pH7.2.

Molecular Weight:

~ 52 kDa

Swiss-Prot:

Q9UJU2

Purification&Purity:

The antibody was affinity-purified from rabbit antiserum by affinity-chromatography using epitope-specific immunogen and the purity is > 95% (by SDS-PAGE).

Applications:

WB: 1:1000~1:2000

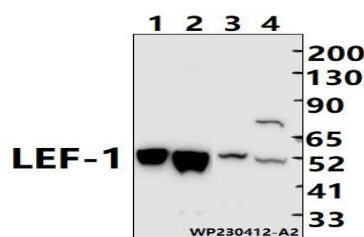
Storage&Stability:

Store at 4 °C short term. Aliquot and store at -20 °C long term. Avoid freeze-thaw cycles.

Specificity:

LEF-1 polyclonal antibody detects endogenous levels of LEF-1 protein.

DATA:



Western blot (WB) analysis of LEF-1 polyclonal antibody at 1:1000 dilution

Lane1: The brain tissue lysate of Mouse(30ug)

Lane2: The brain tissue lysate of Rat(30ug)

Lane3: HuT78 whole cell lysate(30ug)

Lane4: myla2059 whole cell lysate(30ug)

Note:

For research use only, not for use in diagnostic procedure.

Bioworld Technology, Inc.

Add: 1660 South Highway 100, Suite 500 St. Louis Park, MN 55416, USA.

Email: info@bioworld.com

Tel: 6123263284

Fax: 6122933841

Bioworld technology, co. Ltd.

Add: No 9, weidi road Qixia District Nanjing, 210046, P. R. China.

Email: info@biogot.com

Tel: 0086-025-68037686

Fax: 0086-025-68035151