

SRSF7 (N103) polyclonal antibody

Catalog: BS3954

Host: Rabbit

Reactivity: Human, Mouse, Rat

BackGround:

Splicing enhancer elements contain specific binding sites for serine/arginine (SR)-rich splicing factors, which include SC35, 9G8, SRp20, and SF2/ASF. The family of SR factors all contain one or more RNA recognition motifs (RRM) and an arginine/serine (RS)-rich domain. SR factors are essential for constitutive splicing and also regulate splicing in a concentration-dependent manner by influencing the selection of alternative splice sites. The majority of SR proteins, including SC35 and SRp40, are confined to the nucleus, while SF2/ASF, SRp20, and 9G8 are continuously shuttled between the nucleus and the cytoplasm and contribute to mRNA transport.

Product:

Rabbit IgG, 1mg/ml in PBS with 0.02% sodium azide, 50% glycerol, pH7.2

Molecular Weight:

~ 35 kDa

Swiss-Prot:

Q16629

Purification&Purity:

The antibody was affinity-purified from rabbit antiserum by affinity-chromatography using epitope-specific immunogen and the purity is > 95% (by SDS-PAGE).

Applications:

IHC: 1:50~1:200

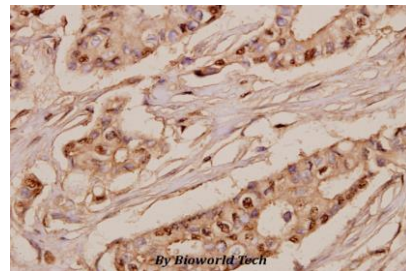
Storage&Stability:

Store at 4 °C short term. Aliquot and store at -20 °C long term. Avoid freeze-thaw cycles.

Specificity:

SRSF7 (N103) polyclonal antibody detects endogenous levels of SRSF7 protein.

DATA:



Immunohistochemistry (IHC) analyzes of SRSF7 (N103) pAb in paraffin-embedded human breast carcinoma tissue at 1:50.

Note:

For research use only, not for use in diagnostic procedure.

Bioworld Technology, Inc.

Add: 1660 South Highway 100, Suite 500 St. Louis Park, MN 55416, USA.

Email: info@bioworld.com

Tel: 6123263284

Fax: 6122933841

Bioworld technology, co. Ltd.

Add: No 9, weidi road Qixia District Nanjing, 210046, P. R. China.

Email: info@biogot.com

Tel: 0086-025-68037686

Fax: 0086-025-68035151