

PAK3 (N148) polyclonal antibody

Catalog: BS3752

Host: Rabbit

Reactivity: Human, Mouse, Rat

Background:

Three isoforms of serine/threonine kinases, designated α PAK p68, β PAK p65 and γ PAK p62, have been shown to exhibit a high degree of sequence homology with the *S. cerevisiae* kinase Ste 20, involved in pheromone signaling. The α , β and γ PAK isoforms complex specifically with Rac1 and Cdc42 in their active GTP-bound state, inhibiting their intrinsic GTPase activity leading to their autophosphorylation. There are eight sites of autophosphorylation on γ PAK, including Ser 19, Ser 141 and Thr 402, and phosphorylation of Ser 141 and Thr 402 is correlated with γ PAK activation. Once phosphorylated and their affinity for Rac/Cdc42 reduced, the PAK isoforms disassociate from the complex to seek downstream substrates.

Product:

Rabbit IgG, 1mg/ml in PBS with 0.02% sodium azide, 50% glycerol, pH7.2

Molecular Weight:

~ 65 kDa

Swiss-Prot:

O75914

Purification&Purity:

The antibody was affinity-purified from rabbit antiserum by affinity-chromatography using epitope-specific immunogen and the purity is > 95% (by SDS-PAGE).

Applications:

WB: 1:500~1:1000

IHC: 1:50~1:200

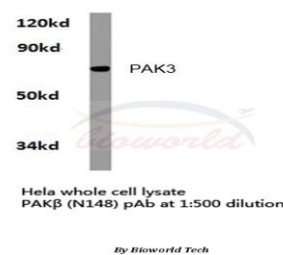
Storage&Stability:

Store at 4 °C short term. Aliquot and store at -20 °C long term. Avoid freeze-thaw cycles.

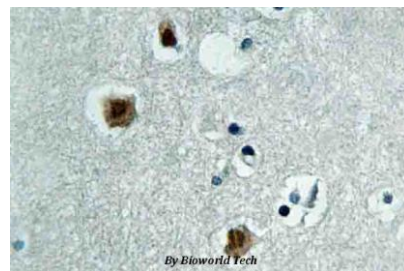
Specificity:

PAK3 (N148) polyclonal antibody detects endogenous levels of PAK3 protein.

DATA:



Western blot (WB) analysis of PAK3 (N148) polyclonal antibody in extracts from hela cells.



Immunohistochemistry (IHC) analyzes of PAK3 (N148) pAb in paraffin-embedded human brain tissue.

Note:

For research use only, not for use in diagnostic procedure.

Bioworld Technology, Inc.

Add: 1660 South Highway 100, Suite 500 St. Louis Park, MN 55416, USA.

Email: info@bioworld.com

Tel: 6123263284

Fax: 6122933841

Bioworld technology, co. Ltd.

Add: No 9, weidi road Qixia District Nanjing, 210046, P. R. China.

Email: info@biogot.com

Tel: 0086-025-68037686

Fax: 0086-025-68035151