

ZIP-kinase (K261) polyclonal antibody

Catalog: BS3724

Host: Rabbit

Reactivity: Human, Mouse, Rat

Background:

Apoptosis is mediated by death domain containing adapter molecules and a caspase family of proteases. Certain serine/threonine protein kinases, such as ASK1 and RIP, are mediators of apoptosis. A novel serine/threonine kinase that mediates apoptosis was recently identified and designated ZIP kinase. ZIP kinase contains an N terminal kinase domain and a C terminal leucine zipper structure and binds to ATF4 that is a member of ATF/CREB family. ZIP kinase has high sequence homology to DAP kinase (death associated protein kinase), which is a mediator of apoptosis induced by gamma interferon. Overexpression of ZIP kinase induces apoptosis. ZIP and DAP kinases represent a novel kinase family, which mediates apoptosis through their catalytic activities. The messenger RNA was ubiquitously expressed in various tissues.

Product:

Rabbit IgG, 1mg/ml in PBS with 0.02% sodium azide, 50% glycerol, pH7.2

Molecular Weight:

~ 52 kDa

Swiss-Prot:

O43293

Purification&Purity:

The antibody was affinity-purified from rabbit antiserum by affinity-chromatography using epitope-specific im-

munogen and the purity is > 95% (by SDS-PAGE).

Applications:

IHC: 1:50~1:200

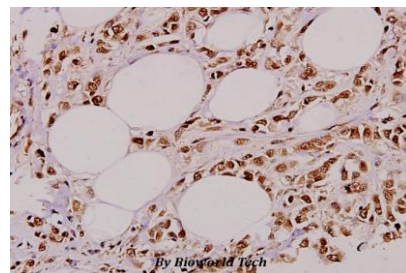
Storage&Stability:

Store at 4 °C short term. Aliquot and store at -20 °C long term. Avoid freeze-thaw cycles.

Specificity:

ZIP-kinase (K261) polyclonal antibody detects endogenous levels of ZIP-kinase protein.

DATA:



Immunohistochemistry (IHC) analyzes of ZIP-kinase (K261) pAb in paraffin-embedded human breast carcinoma tissue at 1:100.

Note:

For research use only, not for use in diagnostic procedure.

Bioworld Technology, Inc.

Add: 1660 South Highway 100, Suite 500 St. Louis Park, MN 55416, USA.

Email: info@bioworld.com

Tel: 6123263284

Fax: 6122933841

Bioworld technology, co. Ltd.

Add: No 9, weidi road Qixia District Nanjing, 210046, P. R. China.

Email: info@biogot.com

Tel: 0086-025-68037686

Fax: 0086-025-68035151