

## PRODUCT DATA SHEET



Bioworld Technology, Inc.

### Cyclin E2 (N387) pAb

Cat No.: BS3710

Host: Rabbit

Reactivity: Human, Mouse

#### BACKGROUND

Cyclin E, along with the three cyclin D proteins and cyclin C, has been shown to represent a putative G1 cyclin on the basis of its cyclic pattern of mRNA expression, with maximal levels being detected near the G1/S boundary. cyclin E has been found to be associated with the transcription factor E2F in a temporally regulated manner. Cyclin E2 is a cyclin E-related protein that specifically interacts with Cdk2 and Cdk3 and with p27 and p21. Cyclin E2 expression peaks at the G1/S phase transition of the cell cycle, in parallel with cyclin E. Whereas cyclin E1 is expressed in most proliferating normal and tumor cells, cyclin E2 levels are low or undetectable in nontransformed cells, and are elevated in tumor-derived cells.

#### PRODUCT

1 mg/ml in Phosphate buffered saline (PBS) with 0.05

#### Molecular Weight

~46 kDa

#### PURIFICATION & PURITY

The antibody was affinity-purified from rabbit antiserum by affinity-chromatography using epitope-specific immunogen and the purity is > 95% (by SDS-PAGE).

#### APPLICATIONS

WB: 1:500 ~ 1:1000

IHC: 1:50 ~ 1:200

IF: 1:50 ~ 1:200 (Recommended Dilutions)

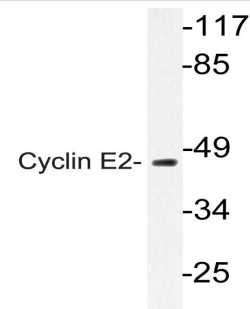
#### STORAGE & STABILITY

Store at 4°C short term. Aliquot and store at -20°C long term. Avoid freeze-thaw cycles.

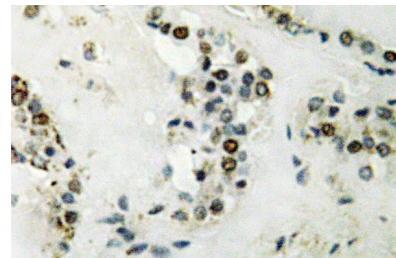
#### SPECIFICITY

Cyclin E2 (N387) pAb detects endogenous levels of Cyclin E2 protein.

#### DATA



Western blot (WB) analysis of Cyclin E2 (N387) pAb in extracts from Jurkat cell.



Immunohistochemistry (IHC) analyzes of Cyclin E2 (N387) pAb in paraffin-embedded human thyroid gland tissue.

#### RESEARCH USE

For research use only, not for use in diagnostic procedures.

Bioworld Technology, Inc.

1660 South Highway 100, Suite 500 St. Louis Park, MN 55416, USA. Tel: 6123263284  
www.bioworlde.com Orders: order@bioworlde.com Support: support@bioworlde.com