

PRODUCT DATA SHEET



Bioworld Technology, Inc.

Connexin 43 (R361) pAb

Cat No.: BS3640

Host: Rabbit

Reactivity: Human, Mouse, Rat

BACKGROUND

The connexins are a group of gap junction proteins which form a hexamer to compose a connexon. Clusters of connexons form a gap junction through which low molecular weight proteins may diffuse from cell to cell. Several mammalian cells with malignant phenotypes exhibit decreased connexin expression and gap junction communication. In Src transformed cells, there is a decrease in gap junctional communication, which appears to be associated with tyrosine phosphorylation of connexin 43. Activated c-Src phosphorylates the C-terminal tail of connexin 43 on Tyr 265, resulting in a stable interaction between both proteins, which leads to inhibition of gap junctional communication. In addition to tyrosine phosphorylation, connexin 43 has also been shown to be phosphorylated on serine in the absence of Src kinases and on both serine and tyrosine in cells expressing Src kinases, such as c-Src and/or pp60v-Src. In human vascular endothelial cells, connexin 43 is posttranslationally modified during mitosis. Mitosis-specific phosphorylation of connexin 43 correlates with the transient loss of gap junction intercellular communication and redistribution of connexin 43.

PRODUCT

1 mg/ml in Phosphate buffered saline (PBS) with 0.05

Molecular Weight

~43 kDa

PURIFICATION & PURITY

The antibody was affinity-purified from rabbit antiserum by affinity-chromatography using epitope-specific immunogen and the purity is > 95% (by SDS-PAGE).

APPLICATIONS

WB: 1:500 ~ 1:1000

IHC: 1:50 ~ 1:200 (Recommended Dilutions)

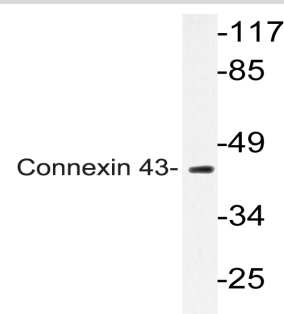
STORAGE & STABILITY

Store at 4°C short term. Aliquot and store at -20°C long term. Avoid freeze-thaw cycles.

SPECIFICITY

Connexin 43 (R361) pAb detects endogenous levels of Connexin 43 protein.

DATA



Western blot (WB) analyzes of Connexin 43 (R361) pAb in extracts from mouse heart cells.



Immunohistochemistry (IHC) analyzes of Connexin 43 (R361) pAb in paraffin-embedded human brain tissue.

RESEARCH USE

For research use only, not for use in diagnostic procedures.

Bioworld Technology, Inc.

1660 South Highway 100, Suite 500 St. Louis Park, MN 55416, USA. Tel: 6123263284
www.bioworlde.com Orders: order@bioworlde.com Support: support@bioworlde.com