

PRODUCT DATA SHEET



Bioworld Technology, Inc.

Tau (P206) pAb

Cat No.: BS3639

Host: Rabbit

Reactivity: Human, Mouse, Rat

BACKGROUND

Tau can be phosphorylated by several protein kinases. Phosphorylation by Tau protein kinase II at Serine 404 is primarily responsible for the functional loss of Tau-mediated tubulin polymerization. In addition, phosphorylation of microtubule-associated Tau results in the dissociation of Tau from the microtubules and tubulin depolymerization. Serine 412 of Tau is modified by Tau protein kinase I/glycogen synthase kinase-3 β (TPKI/GSK-3 β) to disrupt neuronal metabolism in anatomical areas vulnerable to Alzheimer's disease. TPKI/GSK-3 β is expressed primarily in neurons and especially in neurites early in development, whereafter the distribution is concentrated mostly in the cell soma and the proximal neurite region.

PRODUCT

1 mg/ml in Phosphate buffered saline (PBS) with 0.05

Molecular Weight

~79 kDa

PURIFICATION & PURITY

The antibody was affinity-purified from rabbit antiserum by affinity-chromatography using epitope-specific immunogen and the purity is > 95% (by SDS-PAGE).

APPLICATIONS

WB: 1:500 ~ 1:1000

IF: 1:50 ~ 1:200 (Recommended Dilutions)

STORAGE & STABILITY

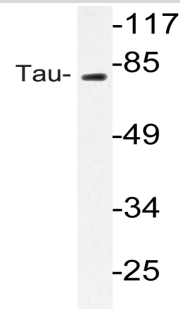
Store at 4°C short term. Aliquot and store at -20°C long term.

Avoid freeze-thaw cycles.

SPECIFICITY

Tau (P206) pAb detects endogenous levels of Tau protein.

DATA



Western blot (WB) analyzes of Tau (P206) pAb in extracts from mouse brain cells.

RESEARCH USE

For research use only, not for use in diagnostic procedures.

Bioworld Technology, Inc.

1660 South Highway 100, Suite 500 St. Louis Park, MN 55416, USA. Tel: 6123263284
www.bioworlde.com Orders: order@bioworlde.com Support: support@bioworlde.com