

## Sp1 (E336) polyclonal antibody

Catalog: BS3622

Host: Rabbit

Reactivity: Human, Mouse, Rat

**BackGround:**

Sp1 is a sequence-specific transcription factor that recognizes GGGGCGGGGC and closely related sequences, which are often referred to as GC boxes. Sp1 was initially identified as a HeLa cell-derived factor that selectively activates in vitro transcription from the SV40 promoter and binds to the multiple GC boxes in the 21 bp repeated elements in SV40. The sequence specificity of DNA binding is conferred by Zn (II) fingers, whereas a different region of Sp1 appears to regulate the affinity of DNA binding. Sp1 belongs to a subgroup of transcription factors that are phosphorylated upon binding to promoter sequences.

**Product:**

Rabbit IgG, 1mg/ml in PBS with 0.02% sodium azide, 50% glycerol, pH7.2

**Molecular Weight:**

~ 90 kDa

**Swiss-Prot:**

P08047

**Purification&Purity:**

The antibody was affinity-purified from rabbit antiserum by affinity-chromatography using epitope-specific immunogen and the purity is > 95% (by SDS-PAGE).

**Applications:**

WB: 1:500~1:1000

IHC: 1:50~1:200

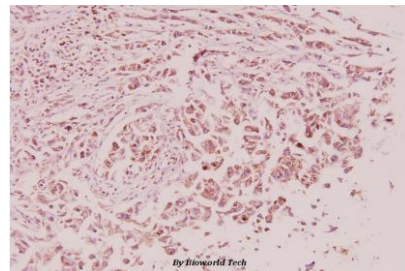
IF: 1:50~1:200

**Storage&Stability:**

Store at 4 °C short term. Aliquot and store at -20 °C long term. Avoid freeze-thaw cycles.

**Specificity:**

SP1 (E336) polyclonal antibody detects endogenous levels of SP1 protein.

**DATA:**

Immunohistochemistry (IHC) analyzes of Sp1 (E336) pAb in paraffin-embedded human breast carcinoma tissue at 1:100.

**Note:**

For research use only, not for use in diagnostic procedure.

**Bioworld Technology, Inc.**

Add: 1660 South Highway 100, Suite 500 St. Louis Park, MN 55416, USA.

Email: [info@bioworld.com](mailto:info@bioworld.com)

Tel: 6123263284

Fax: 6122933841

**Bioworld technology, co. Ltd.**

Add: No 9, weidi road Qixia District Nanjing, 210046, P. R. China.

Email: [info@biogot.com](mailto:info@biogot.com)

Tel: 0086-025-68037686

Fax: 0086-025-68035151