

PRODUCT DATA SHEET



Bioworld Technology, Inc.

VASP (A232) pAb

Cat No.: BS3587

Host: Rabbit

Reactivity: Human, Mouse, Rat

BACKGROUND

The Wiskott-Aldrich syndrome (WAS) is characterized by thrombocytopenia, eczema, defects in cell-mediated and humoral immunity and a propensity for lymphoproliferative diseases. The syndrome is the result of a mutation in the gene encoding a proline-rich protein termed WASP. WASP has been identified as a downstream effector of Cdc42 and has been implicated in Actin polymerization and cytoskeletal organization. A distantly related protein, VASP (vasodilator-stimulated phosphoprotein), is involved in the maintenance of cytoarchitecture by interacting with Actin-like filaments. VASP shares a limited degree of homology with the amino terminus of WASP, which is frequently mutated in WAS patients. An established substrate of cAMP and cGMP dependent kinases, VASP is phosphorylated on a regulatory serine residue 157 and localizes to focal adhesions, microfilaments and highly active regions of the plasma membrane. VASP is highly expressed in human platelets and, like WASP, may play a role in cytoskeletal organization.

PRODUCT

1 mg/ml in Phosphate buffered saline (PBS) with 0.05

Molecular Weight

~46,50 kDa

PURIFICATION & PURITY

The antibody was affinity-purified from rabbit antiserum by affinity-chromatography using epitope-specific immunogen and the purity is > 95% (by SDS-PAGE).

APPLICATIONS

WB: 1:500 ~ 1:1000

IHC: 1:50 ~ 1:200

IF: 1:50 ~ 1:200

(Recommended Dilutions)

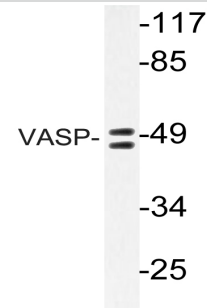
STORAGE & STABILITY

Store at 4°C short term. Aliquot and store at -20°C long term. Avoid freeze-thaw cycles.

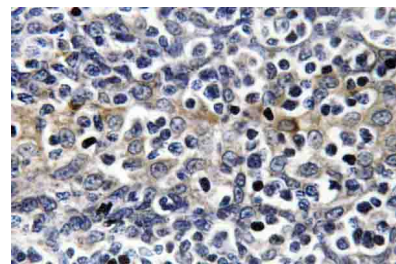
SPECIFICITY

VASP (A232) pAb detects endogenous levels of VASP protein.

DATA



Western blot (WB) analyzes of VASP (A232) pAb in extracts from HeLa cells.



Immunohistochemistry (IHC) analyzes of VASP (A232) pAb in paraffin-embedded human tonsil tissue.

RESEARCH USE

For research use only, not for use in diagnostic procedures.

Bioworld Technology, Inc.

1660 South Highway 100, Suite 500 St. Louis Park, MN 55416, USA. Tel: 6123263284
www.bioworlde.com Orders: order@bioworlde.com Support: support@bioworlde.com