

PRODUCT DATA SHEET



Bioworld Technology, Inc.

IL-11 (G27) Antibody

Cat No.: BS3559

Host: Rabbit

Reactivity: Human, Mouse, Rat

BACKGROUND

Interleukin 11 is a pleiotropic cytokine produced by mesenchymal-derived adherent cells. IL11 shares many functions of IL6 and LIF, including potentiation of megakaryocyte activity, enhancement of human myeloma cell proliferation, and enhancement of hepatic acute phase protein production. Interleukin 11 directly stimulates the proliferation of hematopoietic stem cells and megakaryocyte progenitor cells, and induces megakaryocyte maturation resulting in increased platelet production. Clinically it is used to prevent severe thrombocytopenia and the reduction of the need for platelet transfusion following myelosuppressive chemotherapy.

PRODUCT

1 mg/ml in Phosphate buffered saline (PBS) with 15 mM sodium azide, approx. pH 7.2.

PURIFICATION & PURITY

The antibody was affinity-purified from rabbit antiserum by affinity-chromatography using epitope-specific immunogen and the purity is > 95% (by SDS-PAGE).

APPLICATIONS

IHC: 1:50 ~ 1:200 (Recommended Dilutions)

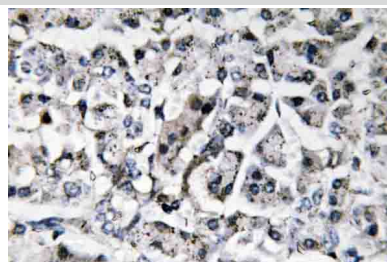
STORAGE & STABILITY

Store at 4°C short term. Aliquot and store at -20°C long term. Avoid freeze-thaw cycles.

SPECIFICITY

IL-11 (G27) antibody detects endogenous levels of IL-11 protein.

DATA



Immunohistochemistry (IHC) analyzes of IL-11 (G27) antibody in paraffin-embedded human pancreas tissue.

RESEARCH USE

For research use only, not for use in diagnostic procedures.

Bioworld Technology, Inc.

1660 South Highway 100, Suite 500 St. Louis Park, MN 55416, USA. Tel: 6123263284
www.bioworlde.com Orders: order@bioworlde.com Support: support@bioworlde.com