

PRODUCT DATA SHEET



Bioworld Technology, Inc.

OAT1 (L304) pAb

Cat No.: BS3556

Host: Rabbit

Reactivity: Human, Mouse, Rat

BACKGROUND

SOAT1 (sterol O-acyltransferase 1), also designated ACAT1, is a homotetrameric enzyme that catalyzes the formation of cholesterol esters from cholesterol and long-chain fatty acyl coenzyme A. The gene encoding human SOAT1 maps to chromosome 1 and is expressed as a protein that localizes to the endoplasmic reticulum (ER) in several tissues, including liver, kidney, adrenal glands and macrophages. SOAT1 is involved in cellular cholesterol homeostasis as well as in foam cell formation and the subsequent progression of atherosclerosis. Several SOAT inhibitors have been developed for the treatment of atherosclerosis. SOAT2 (sterol O-acyltransferase 2), also known as ACAT2 (acyl coenzyme A), participates in lipoprotein assembly, catalyzing cholesterol esterification in mammalian cells. SOAT2 is an integral membrane protein that localizes to the ER of human intestinal cells. SOAT2 deficiency contributes to severe mental retardation and hypotonus.

PRODUCT

1 mg/ml in Phosphate buffered saline (PBS) with 0.05

Molecular Weight

~62 kDa

PURIFICATION & PURITY

The antibody was affinity-purified from rabbit antiserum by affinity-chromatography using epitope-specific immunogen and the purity is > 95% (by SDS-PAGE).

APPLICATIONS

WB: 1:500 ~ 1:1000

IHC: 1:50 ~ 1:200 (Recommended Dilutions)

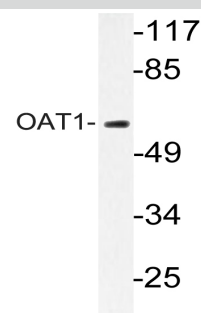
STORAGE & STABILITY

Store at 4°C short term. Aliquot and store at -20°C long term. Avoid freeze-thaw cycles.

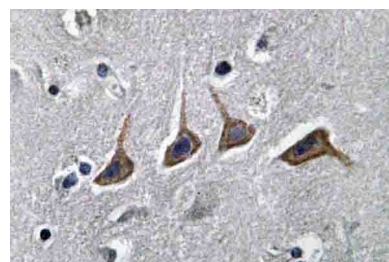
SPECIFICITY

OAT1 (L304) pAb detects endogenous levels of OAT1 protein.

DATA



Western blot (WB) analysis of OAT1 (L304) pAb in extracts from mouse liver cells.



Immunohistochemistry (IHC) analyzes of OAT1 (L304) pAb in paraffin-embedded human brain tissue.

RESEARCH USE

For research use only, not for use in diagnostic procedures.

Bioworld Technology, Inc.

1660 South Highway 100, Suite 500 St. Louis Park, MN 55416, USA. Tel: 6123263284
www.bioworlde.com Orders: order@bioworlde.com Support: support@bioworlde.com