

PRODUCT DATA SHEET



Bioworld Technology, Inc.

ApoE (M86) pAb

Cat No.: BS3550

Host: Rabbit

Reactivity: Human, Mouse, Rat

BACKGROUND

Apolipoprotein-E (apoE) is a protein component of plasma lipoproteins that mediates the binding, internalization and catabolism of lipoprotein particles. It can serve as a ligand for several lipoprotein receptors, including the LDL (apoB/E) receptor and the hepatic apoE (chylomicron remnant) receptor. apoE is produced in most organs and occurs in all plasma lipoprotein fractions, constituting 10-20% of VLDL (very low density lipoprotein) and 1-2% of HDL (high density lipoprotein). Three major isoforms of apoE have been described in human (E2, E3 and E4) which differ by one to two amino acids. Estrogen receptor has been shown to up-regulate apoE gene expression via the ER-mediated pathway, indicating a potential role for apoE in atherosclerosis. This is consistent with studies in mice in which plasma apoE levels were raised, thereby protecting the mice from diet-induced atherosclerosis. apoE has also been shown to be a potent inhibitor of proliferation and thus may play a role in angiogenesis, tumor cell growth and metastasis.

PRODUCT

1 mg/ml in Phosphate buffered saline (PBS) with 0.05

Molecular Weight

~32 kDa

PURIFICATION & PURITY

The antibody was affinity-purified from rabbit antiserum by affinity-chromatography using epitope-specific immunogen and the purity is > 95% (by SDS-PAGE).

APPLICATIONS

WB: 1:500 ~ 1:1000

IHC: 1:50 ~ 1:200 (Recommended Dilutions)

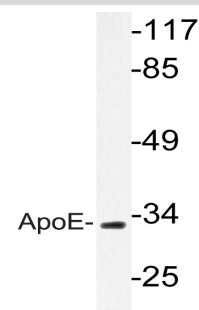
STORAGE & STABILITY

Store at 4°C short term. Aliquot and store at -20°C long term. Avoid freeze-thaw cycles.

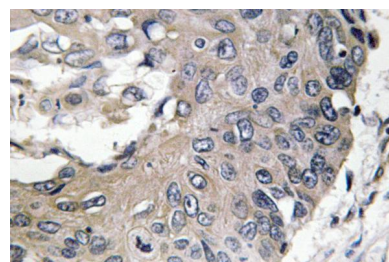
SPECIFICITY

ApoE (M86) pAb detects endogenous levels of ApoE protein.

DATA



Western blot (WB) analysis of ApoE (M86) pAb in extracts from RAW264.7 cells.



Immunohistochemistry (IHC) analyzes of ApoE (M86) pAb in paraffin-embedded human lung carcinoma tissue.

RESEARCH USE

For research use only, not for use in diagnostic procedures.

Bioworld Technology, Inc.

1660 South Highway 100, Suite 500 St. Louis Park, MN 55416, USA. Tel: 6123263284
www.bioworlde.com Orders: order@bioworlde.com Support: support@bioworlde.com