

## ACE (F940) polyclonal antibody

Catalog: BS3485

Host: Rabbit

Reactivity: Human, Mouse, Rat

### BackGround:

Angiotensin-converting enzyme (ACE) is a carboxy-terminal dipeptidyl exo-peptidase that converts Angiotensin I to the potent vasopressive hormone, Angiotensin II. There are two isoforms of ACE, the pulmonary ACEP and the testicular ACET. ACEP is a glycoprotein expressed in vascular endothelial cells of the lung, liver, adrenal cortex, pancreas, kidney and spleen. The ACET isoform is expressed exclusively in adult testis by developing sperm cells, specifically, late pachytene spermatocytes. Additionally, ACE inactivates bradykinin, a vaso-depressor peptide, and is involved in fluid/electrolyte homeostasis.

### Product:

Rabbit IgG, 1mg/ml in PBS with 0.02% sodium azide, 50% glycerol, pH7.2

### Molecular Weight:

~ 160 kDa

### Swiss-Prot:

P12821

### Purification&Purity:

The antibody was affinity-purified from rabbit antiserum by affinity-chromatography using epitope-specific immunogen and the purity is > 95% (by SDS-PAGE).

### Applications:

WB: 1:500~1:1000

IHC: 1:50~1:200

### Storage&Stability:

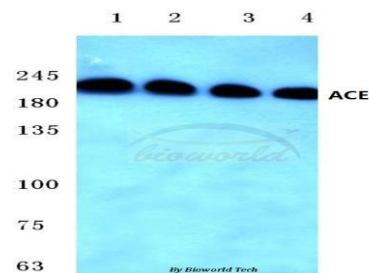
Store at 4 °C short term. Aliquot and store at -20 °C long term. Avoid freeze-thaw cycles.

### Specificity:

ACE (F940) polyclonal antibody detects endogenous lev-

els of Angiotensin-converting enzyme protein.

### DATA:

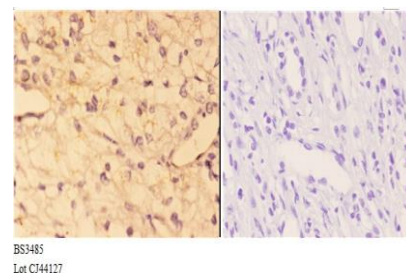


Western blot (WB) analysis of ACE (F940) pAb at 1:500 dilution

Lane1:PC3 whole cell lysate(40ug)

Lane2:A549 whole cell lysate(40ug)

Lane3:SGC7901 whole cell lysate(40ug)



Immunohistochemistry (IHC) analyzes of ACE (F940) pAb in paraffin-embedded human kidney carcinoma tissue at 1:50, showing cytoplasmic and membrane staining. Negative control (the right) Using PBS instead of primary antibody, secondary antibody is Goat Anti-Rabbit IgG-biotin followed by avidin-peroxidase.

### Note:

For research use only, not for use in diagnostic procedure.

### Bioworld Technology, Inc.

Add: 1660 South Highway 100, Suite 500 St. Louis Park, MN 55416, USA.

Email: [info@bioworld.com](mailto:info@bioworld.com)

Tel: 6123263284

Fax: 6122933841

### Bioworld technology, co. Ltd.

Add: No 9, weidi road Qixia District Nanjing, 210046, P. R. China.

Email: [info@biogot.com](mailto:info@biogot.com)

Tel: 0086-025-68037686

Fax: 0086-025-68035151