

CNPase (A108) polyclonal antibody

Catalog: BS3461

Host: Rabbit

Reactivity: Human, Mouse, Rat

BackGround:

CNPase (2',3'-Cyclic Nucleotide 3'-Phosphodiesterase) exists in two forms: 46kDa (CNP1) and 48kDa (CNP2). It is expressed at high levels by oligodendrocytes in the central nervous system and by Schwann cells in the peripheral nervous system and is virtual absent in other cell types. CNPase activity is decreased in demyelinating diseases such as multiple sclerosis. CNPase gene is localized to chromosome 17q21, very near the BRCA 1 familial breast cancer gene.

Product:

Rabbit IgG, 1mg/ml in PBS with 0.02% sodium azide, 50% glycerol, pH7.2

Molecular Weight:

~ 47 kDa

Swiss-Prot:

P09543

Purification&Purity:

The antibody was affinity-purified from rabbit antiserum by affinity-chromatography using epitope-specific immunogen and the purity is > 95% (by SDS-PAGE).

Applications:

WB: 1:500~1:1000

IHC: 1:50~1:200

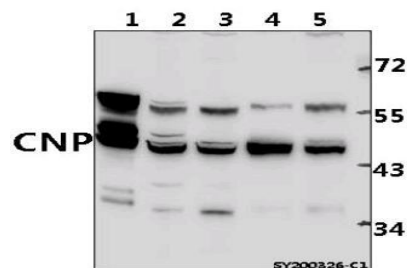
Storage&Stability:

Store at 4 °C short term. Aliquot and store at -20 °C long term. Avoid freeze-thaw cycles.

Specificity:

CNPase (A108) polyclonal antibody detects endogenous levels of CNPase protein.

DATA:



Western blot (WB) analysis of CNP pAb at 1:1000 dilution

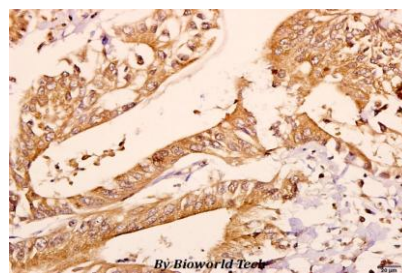
Lane1:The Brain tissue lysate of Mouse(40ug)

Lane2:PC12 whole cell lysate(40ug)

Lane3:CT-26 whole cell lysate(40ug)

Lane4:SGC7901 whole cell lysate(40ug)

Lane5:K562 whole cell lysate(40ug)



Immunohistochemistry (IHC) analyzes of CNPase (A108) pAb in paraffin-embedded human colorectal carcinoma tissue at 1:50.

Note:

For research use only, not for use in diagnostic procedure.

Bioworld Technology, Inc.

Add: 1660 South Highway 100, Suite 500 St. Louis Park, MN 55416, USA.

Email: info@bioworld.com

Tel: 6123263284

Fax: 6122933841

Bioworld technology, co. Ltd.

Add: No 9, weidi road Qixia District Nanjing, 210046, P. R. China.

Email: info@biogot.com

Tel: 0086-025-68037686

Fax: 0086-025-68035151