

PRODUCT DATA SHEET



Bioworld Technology, Inc.

TRP2 (K89) pAb

Cat No.: BS3320

Host: Rabbit

Reactivity: Human, Mouse

BACKGROUND

Tyrosinase (TYR), a type I membrane protein and copper-containing enzyme, is involved in the production of melanin, the primary pigment found in vertebrates. Melanin biogenesis requires the enzymatic activity of TYR, which catalyzes the critical and rate-limiting step of tyrosine hydroxylation in the biosynthesis of melanin. Defects effecting TYR activity result in various forms of albinism. The TYR-related proteins, TRP1 and TRP2, are also specifically expressed in melanocytes, and they likewise contribute to the synthesis of melanin within the melanosomes. The TRPs, including TYR, all share a similar transmembrane region, contain two metal-binding regions and a cysteine-rich epidermal growth factor motif, and are localized in the melanosomal membrane. These proteins, however, have distinct catalytic activity, and they individually contribute to the biosynthesis of melanin biopolymers. The TRPs are believed to exist as a multi-enzyme complex, as these proteins form aggregates together, and the expression of TRP1 also helps stabilize TYR in melanocytes.

PRODUCT

1 mg/ml in Phosphate buffered saline (PBS) with 0.05

Molecular Weight

~60 kDa

PURIFICATION & PURITY

The antibody was affinity-purified from rabbit antiserum by affinity-chromatography using epitope-specific immunogen and the purity is > 95% (by SDS-PAGE).

APPLICATIONS

WB: 1:500 ~ 1:1000

IF: 1:50 ~ 1:200 (Recommended Dilutions)

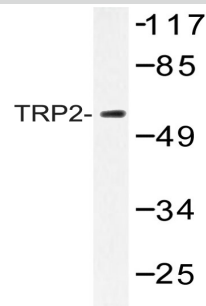
STORAGE & STABILITY

Store at 4°C short term. Aliquot and store at -20°C long term. Avoid freeze-thaw cycles.

SPECIFICITY

TRP2 (K89) pAb detects endogenous levels of TRP2 protein.

DATA



Western blot (WB) analysis of TRP2 (K89) pAb in extracts from K562 cells.

RESEARCH USE

For research use only, not for use in diagnostic procedures.

Bioworld Technology, Inc.

1660 South Highway 100, Suite 500 St. Louis Park, MN 55416, USA. Tel: 6123263284
www.bioworld.com Orders: order@bioworld.com Support: support@bioworld.com