

## Paxillin (Q82) polyclonal antibody

Catalog: BS3183

Host: Rabbit

Reactivity: Human,Rat

### BackGround:

Paxillin is a focal adhesion phosphoprotein that is localized to the cytoskeleton. FAK phosphorylates paxillin specifically on Tyr 118 in vitro. However, FAK phosphorylation does not seem to be required for the recruitment of paxillin to cell adhesion sites. Paxillin may play a role in signal transduction, regulation of cell morphology and the recruitment of structural and signaling molecules to focal adhesions. It has been shown that the amount of paxillin is reduced in mitotic cells by proteolytic down-regulation and that paxillin is alternatively phosphorylated on serine rather than on tyrosine and serine during mitosis.

### Product:

Rabbit IgG, 1mg/ml in PBS with 0.02% sodium azide, 50% glycerol, pH7.2

### Molecular Weight:

~ 65 kDa

### Swiss-Prot:

P49023

### Purification&Purity:

The antibody was affinity-purified from rabbit antiserum by affinity-chromatography using epitope-specific immunogen and the purity is > 95% (by SDS-PAGE).

### Applications:

WB: 1:500~1:1000

IHC: 1:50~1:200

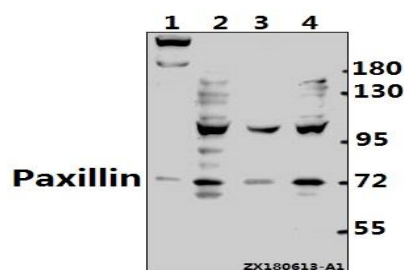
### Storage&Stability:

Store at 4 °C short term. Aliquot and store at -20 °C long term. Avoid freeze-thaw cycles.

### Specificity:

Paxillin (Q82) polyclonal antibody detects endogenous levels of Paxillin protein.

### DATA:



Western blot (WB) analysis of Paxillin (Q82) pAb at 1:500 dilution

Lane1:PC12 whole cell lysate(40ug)

Lane2:HuT78 whole cell lysate(40ug)

Lane3:Panc1 whole cell lysate(40ug)

Lane4:A549 whole cell lysate(40ug)

### Note:

For research use only, not for use in diagnostic procedure.

### Bioworld Technology, Inc.

Add: 1660 South Highway 100, Suite 500 St. Louis Park, MN 55416, USA.

Email: [info@bioworld.com](mailto:info@bioworld.com)

Tel: 6123263284

Fax: 6122933841

### Bioworld technology, co. Ltd.

Add: No 9, weidi road Qixia District Nanjing, 210046, P. R. China.

Email: [info@biogot.com](mailto:info@biogot.com)

Tel: 0086-025-68037686

Fax: 0086-025-68035151