

RPL39 (S39) polyclonal antibody

Catalog: BS3052

Host: Rabbit

Reactivity: Human, Mouse, Rat

BackGround:

Ribosomes, the organelles that catalyze protein synthesis, are composed of a small subunit (40S) and a large subunit (60S) that consist of over 80 distinct ribosomal proteins. Mammalian ribosomal proteins are encoded by multigene families that contain processed pseudogenes and one functional intron-containing gene within their coding regions. Ribosomal Protein L39 (RPL39), also known as 60S Ribosomal Protein L39, consists of 51 amino acids and is the smallest protein found in liver ribosomes. Ribosomal Protein L39 localizes to cytoplasm and is a member of the S39E family of ribosomal proteins. The gene encoding Ribosomal Protein L39 maps to human chromosome Xq24, and shares 92 percent homology with Ribosomal Protein L39L (Ribosomal Protein L39-like), which is also known as RPL39L, L39-2 or RPL39L1. Ribosomal Protein L39L is associated with the 60S ribosomal subunit and is expressed in testis with localization in nucleolus.

Product:

Rabbit IgG, 1mg/ml in PBS with 0.02% sodium azide, 50% glycerol, pH7.2

Molecular Weight:

~ 6 kDa

Swiss-Prot:

P62891

Purification&Purity:

The antibody was affinity-purified from rabbit antiserum

by affinity-chromatography using epitope-specific immunogen and the purity is > 95% (by SDS-PAGE).

Applications:

IHC:1:50~1:200

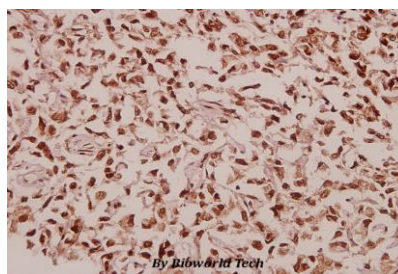
Storage&Stability:

Store at 4 °C short term. Aliquot and store at -20 °C long term. Avoid freeze-thaw cycles.

Specificity:

Ribosomal Protein L39 (S39) polyclonal antibody detects endogenous levels of Ribosomal Protein L39 protein.

DATA:



Immunohistochemistry (IHC) analyzes of RPL39 (S39) pAb in paraffin-embedded human colorectal carcinoma tissue at 1:50.

Note:

For research use only, not for use in diagnostic procedure.

Bioworld Technology, Inc.

Add: 1660 South Highway 100, Suite 500 St. Louis Park, MN 55416, USA.

Email: info@bioworld.com

Tel: 6123263284

Fax: 6122933841

Bioworld technology, co. Ltd.

Add: No 9, weidi road Qixia District Nanjing, 210046, P. R. China.

Email: info@biogot.com

Tel: 0086-025-68037686

Fax: 0086-025-68035151