

## RPS4Y1 (K254) polyclonal antibody

Catalog: BS3044

Host: Rabbit

Reactivity: Human, Mouse

### Background:

Ribosomes, the organelles that catalyze protein synthesis, are composed of a small subunit (40S) and a large subunit (60S) that consist of over 80 distinct ribosomal proteins. Mammalian ribosomal proteins are encoded by multigene families that contain processed pseudogenes and one functional intron-containing gene within their coding regions. RPS4Y2 (ribosomal protein S4, Y-linked 2), RPS4Y1 (ribosomal protein S4, Y-linked 1) and RPS4X (ribosomal protein S4, X-linked) are proteins that contain one S4 RNA-binding domain and exist as components of the 40S ribosomal subunit, indicating a possible role in protein synthesis.

### Product:

Rabbit IgG, 1mg/ml in PBS with 0.02% sodium azide, 50% glycerol, pH7.2

### Molecular Weight:

~ 29 kDa

### Swiss-Prot:

P22090

### Purification&Purity:

The antibody was affinity-purified from rabbit antiserum by affinity-chromatography using epitope-specific immunogen and the purity is > 95% (by SDS-PAGE).

### Applications:

WB: 1:500~1:1000

IHC: 1:50~1:200

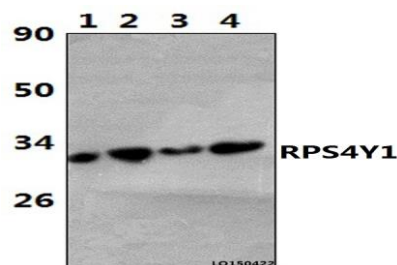
### Storage&Stability:

Store at 4 °C short term. Aliquot and store at -20 °C long term. Avoid freeze-thaw cycles.

### Specificity:

Ribosomal Protein S4Y1 (K254) polyclonal antibody detects endogenous levels of Ribosomal Protein S4Y1 protein.

### DATA:



Western blot (WB) analysis of RPS4Y1 (K254) polyclonal antibody at 1:1000 dilution Lane1:HELA whole cell lysate(42ug) Lane2:HEK293T whole cell lysate(37ug) Lane3:LO2 whole cell lysate(38ug) Lane4:RAW264.7 whole cell lysate(57ug)

### Note:

For research use only, not for use in diagnostic procedure.

### Bioworld Technology, Inc.

Add: 1660 South Highway 100, Suite 500 St. Louis Park, MN 55416, USA.

Email: [info@bioworld.com](mailto:info@bioworld.com)

Tel: 6123263284

Fax: 6122933841

### Bioworld technology, co. Ltd.

Add: No 9, weidi road Qixia District Nanjing, 210046, P. R. China.

Email: [info@biogot.com](mailto:info@biogot.com)

Tel: 0086-025-68037686

Fax: 0086-025-68035151