

## PRODUCT DATA SHEET



Bioworld Technology, Inc.

### BRCA2 (N60) Antibody

Cat No.: BS2864

Host: Rabbit

Reactivity: Human,Rat

#### BACKGROUND

BRCA 2 is localized to chromosome 13q12 - q13. Loss of heterozygosity of 13q is observed in 25% of sporadic breast tumors, which indicates that BRCA 2 might be a tumor suppressor gene. BRCA 2 confers only a low ovarian cancer risk. Reportedly, in MCF-10F (normal breast epithelial cell line) and MCF-7 (breast cancer cell line) cells the expression of BRCA 2 RNA lowers in G0 and early G1 phases then gets up-regulated at the G1 / S phase junction.

#### PRODUCT

1 mg/ml in Phosphate buffered saline (PBS) with 15 mM sodium azide, approx. pH 7.2.

#### PURIFICATION & PURITY

The antibody was affinity-purified from rabbit antiserum by affinity-chromatography using epitope-specific immunogen and the purity is > 95% (by SDS-PAGE).

#### APPLICATIONS

IHC: 1:50 ~ 1:200 (Recommended Dilutions)

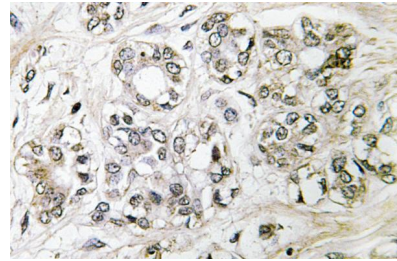
#### STORAGE & STABILITY

Store at 4°C short term. Aliquot and store at -20°C long term. Avoid freeze-thaw cycles.

#### SPECIFICITY

BRCA2 (N60) antibody detects endogenous levels of BRCA2 protein.

#### DATA



**Immunohistochemistry (IHC)** analyzes of BRCA2 (N60) antibody in paraffin-embedded human breast carcinoma tissue.

#### RESEARCH USE

For research use only, not for use in diagnostic procedures.

Bioworld Technology, Inc.

1660 South Highway 100, Suite 500 St. Louis Park, MN 55416, USA. Tel: 6123263284  
www.bioworlde.com Orders: order@bioworlde.com Support: support@bioworlde.com